

# 17 June 2019

At the conclusion of the Corporate, Finance, Properties  
and Tenders Committee



## Environment Committee

Sydney 2030 Green/Global/Connected

**Agenda**

- 1. Disclosures of Interest**
- 2. Grants and Sponsorship - Round One 2019/20 - Environmental Grants**
- 3. Design Advisory Panel - Reappointment of Members and Revised Terms of Reference**
- 4. Project Scope - City Centre Playground, Cook and Phillip Park**
- 5. Project Scope - Small Parks Upgrade - Observatory Hill Park Pathways, Millers Point**
- 6. Project Scope - Small Parks Upgrade - Womerah Gardens, Darlinghurst**
- 7. Project Scope - Ross Street Playground Upgrade, Glebe**

# Guidelines for Speakers at Council Committees



As part of our democratic process, the City invites members of the community to speak directly to Councillors during Committee meetings about items on the agenda.

To enable the Committee to hear a wide range of views and concerns within the limited time available, we encourage people interested in speaking at Committee to:

1. Register to speak by calling Council's Secretariat on 9265 9310 before 12.00 noon on the day of the meeting.
2. Check the recommendation in the Committee report before speaking, as it may address your concerns so that you just need to indicate your support for the recommendation.
3. Note that there is a three minute time limit for each speaker (with a warning bell at two minutes) and prepare your presentation to cover your major points within that time
4. Avoid repeating what previous speakers have said and focus on issues and information that the Committee may not already know.
5. If there is a large number of people interested in the same item as you, try to nominate three representatives to speak on your behalf and to indicate how many people they are representing.
6. Before speaking, turn on the microphone by pressing the button next to it and speak clearly so that everyone in the Council Chamber can hear.
7. Be prepared to quickly return to the microphone and respond briefly to any questions from Councillors, after all speakers on an item have made their presentations.

Committee meetings can continue until very late, particularly when there is a long agenda and a large number of speakers. This impacts on speakers who have to wait until very late, as well as Council staff and Councillors who are required to remain focused and alert until very late. At the start of each Committee meeting, the Committee Chair may reorder agenda items so that those items with speakers can be dealt with first.

Committee reports are on line at [www.cityofsydney.nsw.gov.au](http://www.cityofsydney.nsw.gov.au), with printed copies available at Sydney Town Hall immediately prior to the meeting. Council staff are also available prior to the meeting to assist.

**Item 1.****Disclosures of Interest**

Pursuant to the provisions of section 451 of the Local Government Act 1993, Councillors are required to disclose pecuniary interests in any matter on the agenda for this meeting of the Environment Committee.

Councillors are also required to disclose any non-pecuniary interests in any matter on the agenda for this meeting of the Environment Committee in accordance with the relevant clauses of the Code of Conduct – February 2016.

In both cases, the nature of the interest must be disclosed.

Written disclosures of interest received by the Chief Executive Officer in relation to items for consideration at this meeting will be laid on the table.

## Item 2.

### Grants and Sponsorship - Round One 2019/20 - Environmental Grants

**File No:** S117676

#### Summary

The City of Sydney's Grants and Sponsorship Program supports initiatives and projects that build the social, cultural, environmental and economic life of the city. To achieve the objectives of Sustainable Sydney 2030 requires genuine partnership between government, business and the community.

The provision of grants and sponsorships is a mechanism to further the aims identified in the City's social, economic and environmental policies. Applications are assessed against these policies and against broad City objectives and plans. In this way, the City and the community act collaboratively to bring to life Sustainable Sydney 2030 and the City of Villages it envisions.

The City advertised the following three environmental grant programs in Round One of the annual grants and sponsorship program for 2019/20:

- Environmental Performance - Building Operations: funding is available to help lower the costs of implementing building operations efficiency measures;
- Environmental Performance - Ratings and Assessments: funding is available to undertake building performance ratings and certifications, energy audits and assessments to enable a building or facility owner to understand their opportunities to improve environmental performance; and
- Environmental Performance – Innovation: funding is available to assess or demonstrate new technologies or processes that are currently not being implemented in the local market, but have the potential to achieve greenhouse gas emissions reductions and resource efficiencies that could be rolled out at scale within the local area.

For the Environmental Performance Grants, 19 eligible applications were received. This report recommends a total of 15 grants to a total value of \$131,284 for the 2019/20 financial year.

On 11 December 2017, Council adopted a revised Grants and Sponsorship Policy. All grants in this report were assessed against criteria and guidelines set out in this policy, with reference to Sustainable Sydney 2030, Environmental Action 2016-2021 Strategy and Action Plan, and Residential Apartments Sustainability Plan.

All grant recipients will be required to sign a contract, meet specific performance outcomes and acquit their grant.

All cash figures in this report exclude GST.

## Recommendation

It is resolved that:

- (A) Council approve the cash recommendations for the Environmental Performance - Ratings and Assessment Grant Program as per Attachment A to the subject report;
- (B) Council approve the cash recommendations for the Environmental Performance - Innovation Grant Program as per Attachment B to the subject report;
- (C) Council note that all grant amounts are exclusive of GST; and
- (D) authority be delegated to the Chief Executive Officer to negotiate, execute and administer agreements with any organisation approved for a grant or sponsorship under terms consistent with this resolution and the Grants and Sponsorship Policy.

## Attachments

- Attachment A.** Round One 2019/20 - Recommended for Funding - Environmental Performance - Ratings and Assessment Grant Program
- Attachment B.** Round One 2019/20 - Recommended for Funding - Environmental Performance - Innovation Grant Program
- Attachment C.** Round One 2019/20 - Not Recommended for Funding - Environmental Performance - Innovation Grant Program

## Background

1. The City of Sydney's Grants and Sponsorship Program supports residents, businesses and not-for-profit organisations to undertake initiatives and projects that build the social, cultural, environmental and economic life of the city.
2. On 6 February 2019, the City announced Round One of the annual grants program for 2019/20 as being open for applications on the City's website, with grant applications closing on 11 March 2019.
3. The three environmental programs promoted were:
  - Environmental Performance - Building Operations;
  - Environmental Performance - Ratings and Assessments; and
  - Environmental Performance - Innovation.
4. Information about these grant programs (such as application dates, guidelines, eligibility criteria and sample applications) was made available on the City's website. The City actively promoted the programs through Facebook, Twitter, What's On and Google AdWords. Email campaigns were also utilised to target interested parties who have applied previously for grants at the City or who have expressed an interest in the City's programs. The grants were also promoted to peak industry organisations, networks and stakeholders.
5. The three Environmental Performance programs are open to appropriately incorporated for-profit and not-for-profit organisations. Nine applications were received this round from for-profit organisations. Eight of the applications from for-profit organisations are recommended in this report:
  - Aldprop Pty Ltd;
  - Ambler Family Trust / Regime PL;
  - Daisho Development Sydney;
  - Greenspace Global Pty Limited;
  - Laudet Pty Ltd;
  - The Schwartz Family Company (2 applications recommended); and
  - The Trustee for the Best Hotel.
6. The three environmental performance grant programs aim to build capacity and address barriers to the implementation of environmental actions within key customer sectors.
7. The assessment panels for applications received under the Environmental Performance Grants Program comprised the Sustainability Engagement Managers, Manager Carbon Strategy, Waste Strategy Manager, Environmental Projects Officer, Sustainability Engagement Coordinators, Sustainability Engagement Coordinator - Building Tune-Up, Sustainability Engagement – Residential and Sustainability Engagement Coordinator – Smart Green Apartments.

**Environmental Performance - Building Operations Grant Program**

8. The Environmental Performance - Building Operations Grant Program aims to improve the environmental performance of buildings by lowering the costs and mitigating the barriers of implementing building efficiency measures, such as water monitoring in residential apartments.
9. No applications were received.

**Environmental Performance - Ratings and Assessments Grant Program**

10. The Environmental Performance - Ratings and Assessments Grant Program aims to address barriers to the uptake of building performance ratings and assessments across energy, water, waste and other sustainability aspects. Ratings and assessments enable a building owner or facility manager to understand their building's environmental performance and to identify efficiency opportunities. Applicants are required to implement efficiency measures based on the recommendations of the assessments.
11. Eleven applications have been received and assessed. All eleven are recommended for support to a value of \$80,689. There were seven applications received from the accommodation and entertainment building sectors, and four applications received from the residential building sector.

**Environmental Performance - Innovation Grant Program**

12. The Environmental Performance - Innovation Grant Program supports the feasibility or demonstration of new technologies or processes that are currently not being implemented in the local market, but have the potential to achieve greenhouse gas emissions reductions and resource efficiencies that could be rolled out at scale within the local area. Eight applications have been received and assessed. Four are recommended for support to the value of \$50,595.
  - (a) Bugisu Project Limited is aiming to undertake a feasibility study to implement a scalable, zero-waste, and closed-loop coffee delivery service by using 10 workplaces as delivery nodes and engaging over 200 workers with the project.
  - (b) Greenspace Global Party Limited will be installing sensor technology to monitor the effects and performance of an urban farm at 2 Market Street, Sydney. The demonstration project will aim to show how transforming under-utilised urban spaces into productive green spaces can improve liveability, amenity and safety, by quantifying the benefits to the environment and human health.
  - (c) Sydney Institute of Marine Science will be undertaking a feasibility study to investigate the potential for natural burrowing animals (bioturbators) to be reintroduced into Sydney Harbour to remediate harmful pollutants retained in sediments that enter via stormwater inputs.
  - (d) The University of New South Wales will develop a feasibility study to investigate walkability in Sydney through the mapping of greenery and noise using crowd-sourced data from smartphones to better understand and manage the environmental performance of the city.



13. The 2019/20 Environmental Performance Program budget is summarised as follows:

Total cash budget	\$870,000
Total cash committed to previously approved applications	\$30,000
Total cash amount available for allocation	\$840,000
Total number of eligible applications	19
Total cash requested	\$341,434
Total number of applications recommended for cash support	15
Total amount of funding cash recommended	\$131,284
Amount remaining for subsequent allocation of the program	\$708,716

14. The Environmental Performance Grant Program will open again for applications in June 2019 for the second round of the 2019/20 financial year.

## Key Implications

### Strategic Alignment - Sustainable Sydney 2030 Vision

15. Sustainable Sydney 2030 is a vision for the sustainable development of the City to 2030 and beyond. It includes 10 strategic directions to guide the future of the City, as well as 10 targets against which to measure progress. This program is aligned with the following strategic directions and objectives:
- (a) Direction 2 provides a road map for the City to become A Leading Environmental Performer - the grant projects recommended in this report will support the City's endeavours to work with our business and residential communities to reduce greenhouse emissions, potable water use and encourage diversion of waste from landfill across the local government area.

### Organisational Impact

16. The grants and sponsorships contract management process will involve staff in the City's grants and sustainability teams setting contract conditions and performance measures for each approved project and reviewing project acquittals.

### Environmental

17. The recommended environmental grants under the Ratings and Assessments Program will provide energy and water savings as a result of improved monitoring and applicants implementing efficiency measures as a condition of the grants.

18. The recommended environmental grants under the Innovation Program will enhance knowledge sharing, skills uptake and capacity in best practice environmental performance, approaches and solutions in the local area.

### **Budget Implications**

19. A total value of \$131,284 in cash is recommended in this report and is provided in the draft 2019/20 Environmental Performance Grants budget.

### **Relevant Legislation**

20. Section 356 of the Local Government Act 1993 provides that a council may, in accordance with a resolution of the council, contribute money or otherwise grant financial assistance to persons for the purpose of exercising its functions.
21. Section 356(3)(a) - (d) is satisfied for the purpose of providing grant funding to for-profit organisations because:
  - (a) the funding is part of the Environmental Grants - Environmental Performance Grants program;
  - (b) the details of the program have been included in Council's draft operation plan for financial year 2019/20;
  - (c) the program's budget does not exceed five per cent of Council's proposed income from ordinary rates for financial year 2019/20; and
  - (d) the program applies to a significant group of persons within the local government area.

### **Public Consultation**

22. For all programs open to application in Round One of the annual grants and sponsorship program for 2019/20, two question and answer sessions were held in Town Hall House to assist potential applicants with their applications on the following dates:
  - (a) Wednesday 20 February 2019, 4pm to 7pm; and
  - (b) Monday 25 February 2019, 4pm to 7pm.

**EMMA RIGNEY**

A/Director City Life

Ailsa McConnachie-Folwell, Grants Officer

# **Attachment A**

**Round 1 2019-20  
Recommended for Funding –  
Environmental Performance Grants –  
Ratings and Assessments**

## Environmental Performance Grants

### Recommended for Funding

## Environmental Performance Grant – Ratings and Assessments Grant 2019-20 Round 1

Organisation Name	Project Name	Project Description	\$ Amount Requested	\$ Amount Recommended	Conditions
<b>RECOMMENDED FOR FUNDING</b>					
Aldprop Pty Ltd	NABERS Energy Rating – 22 Shelly Street, Sydney (IBIS King Street Wharf)	A year 1 NABERS energy rating for a 91 room hotel to identify cost effective options to minimise energy consumption.	\$7,829	\$7,829	Nil
Daisho Development Sydney Pty Ltd	NABERS Energy Rating - 7 Hickson Road, The Rocks (Park Hyatt Sydney Hotel)	A year 1 NABERS energy rating for a 155 room hotel to identify cost effective options to minimise energy consumption.	\$10,000	\$10,000	Nil
Laudet Pty Limited	NABERS Energy and Water Rating – 28 Albion Street, Surry Hills (Rydges Central Hotel)	A year 1 NABERS energy and water rating for a 309 room hotel to identify cost effective options to minimise energy and water consumption.	\$9,429	\$9,429	Nil
Strata Plan 64040	NABERS Energy and Water Rating - 59 Bay Street, Ultimo	An Energy Audit and a first year NABERS Energy and Water rating for a 6 level, 32 unit residential building to understand how to identify opportunities to reduce energy and water consumption.	\$5,928	\$5,928	Nil
Strata Plan 69746	NABERS Energy and Water Rating – 1-11 Hunter Street, Waterloo	A first year NABERS energy and water rating for a 9 level, 177 unit residential building to understand how to identify efficiency opportunities.	\$4,528	\$4,528	Nil
Strata Plan 70999	NABERS Energy and Water Rating - 6B Grandstand Parade, Zetland	A first year NABERS energy and water rating for a 5 level, 129 unit residential building to demonstrate performance since implementing previous energy audit recommendations.	\$3,415	\$3,415	Nil

# Environmental Performance Grant – Ratings and Assessments Grant 2019-20 Round 1

Organisation Name

Project Name

Project Description

\$ Amount Requested

\$ Amount Recommended

Conditions

## RECOMMENDED FOR FUNDING

Strata Plan 96161	Energy Assessment, NABERS Rating and Solar Feasibility Study – 156 Botany Road, Alexandria	An energy and water assessment, energy rating and solar feasibility study for a 4 level, 24 apartment residential building to identify energy efficiency opportunities and cost savings.	\$6,320	\$6,320	Nil
The Trustee for Best Hotel Trust	Energy Audit - 12 Darling Drive, Darling Harbour (Sofitel Hotel)	An energy audit for a 590 room hotel to provide cost effective options to minimise energy usage.	\$18,000	\$15,000	Applicant to include NABERS energy rating in accordance with the City's grant guidelines. The applicant to provide an energy audit in accordance with the City's report template.
The Trustee For Schwartz Family Trust	NABERS Energy and Water Rating – 389 Pitt Street, Sydney (Rydges World Square Hotel)	A first year NABERS energy and water rating for a 454 room hotel to identify opportunities to reduce energy and water consumption.	\$8,409	\$8,409	Nil
The Trustee For Schwartz Family Trust	Energy Audit - 389 Pitt Street, Sydney (Rydges World Square Hotel)	A level 2 Energy Audit for monitoring, recording and reporting all aspects of energy usage in a 454 room hotel.	\$15,000	\$6,591	Applicant to provide an energy audit in accordance with the City's report template.
The Trustee for the Ambler Family Trust	Energy Audit – 27 Orwell Street, Potts Point (Jolly Swagman Backpackers Hostel)	An energy audit for a 45 room hostel to understand how to provide cost effective methods to minimising energy consumption and increasing efficiencies.	\$3,240	\$3,240	Nil

# **Attachment B**

**Round 1 2019-20  
Recommended for Funding –  
Environmental Performance Grants - Innovation**

## Environmental Performance Grants

### Recommended for Funding

#### Environmental Performance – Innovation Grant 2019-20 Round 1

Organisation Name	Project Name	Project Description	\$ Amount Requested	\$ Amount Recommended	Conditions
<b>RECOMMENDED FOR FUNDING</b>					
Bugisu Project Limited	Sydney Home Coffee Program	A feasibility study to implement a scalable, zero-waste, closed-loop coffee delivery service by using 10 workplaces as delivery nodes and engaging over 200 workers with the project.	\$6,000	\$6,000	Nil
Greenspace Global Pty Limited	Greenspace Urban Farm Nature Study	Installation of sensor technology to monitor the effects and performance of an urban farm at 2 Market Street, Sydney. The demonstration project will aim to show how transforming under-utilised urban spaces into productive green spaces can improve liveability, amenity and safety, by quantifying the benefits to the environment and human health.	\$80,000	\$20,000	Applicant to provide a revised project plan
Sydney Institute Of Marine Science	Developing end-of-pipe bioremediation for stormwater pollution	A feasibility study to measure the potential for natural burrowing animals (bioturbators) to be reintroduced into Sydney Harbour to remediate harmful pollutants retained in sediments that enter via stormwater inputs.	\$19,595	\$19,595	Nil
University Of New South Wales	Mapping urban greenery and noise in Sydney with crowd-sourced mobile data	A feasibility study to investigate walkability in Sydney through the mapping of greenery and noise using crowd-sourced data from smartphones to better understand and manage the environmental performance of the city.	\$10,000	\$5,000	Nil

# **Attachment C**

**Round 1 2019-20  
Not Recommended for Funding –  
Environmental Performance Grants - Innovation**



## Environmental Performance Grants

### Not Recommended for Funding

### Environmental Performance Grant – Innovation Grant 2019-20 Round 1

Organisation Name

Project Name

Project Description

\$ Amount Requested

#### NOT RECOMMENDED FOR FUNDING

Purposed Pty Ltd	The Green Wallet Feasibility	A feasibility study to investigate the potential of new technologies, by quantifying educational and personalised data to encourage individuals to reduce their transportation carbon footprint.	\$20,000
Total Environment Centre Inc	Newtown Eats: social innovation in food waste avoidance in the Newtown Precinct	A feasibility study to address food waste in the vegan food retail sector in King Street, Newtown by building a food waste avoidance culture within the City of Sydney's residents, businesses and visitors.	\$24,999
University Of Sydney	Wise Parking: Towards a Dynamic End User-Friendly On-Street Parking Management System in Smart Sydney	A demonstration project to create a user friendly, real-time parking management system and mobile app aimed at maximising the efficiency of on-street parking and reducing traffic congestion within the City.	\$52,916
University Of Sydney	Testing of a Biophilic house prototype and development of the Biophilic house guide	A demonstration project to retrofit an existing free-standing house with biophilic design concepts to develop a set of guidelines for taking a house off the grid, whilst increasing an occupant's connection to the natural environment.	\$79,900

### **Item 3.**

#### **Design Advisory Panel - Reappointment of Members and Revised Terms of Reference**

**File No: X002290**

#### **Summary**

In April 2007, Council approved the establishment of the Design Advisory Panel (the Panel). In accordance with the Panel's Terms of Reference, the Panel is to provide the City with high level independent expert advice and expertise on urban design, architecture, landscape architecture, art and sustainability.

The Panel has met regularly since its establishment. The work of the Panel underscores the City's ongoing commitment to excellence in urban design and planning and has included input on the implementation of Sydney 2030, Green Square, City Centre transformation projects, City projects, major developments and development applications.

Members of the Panel were appointed for an initial two-year term. Subsequently, Panel members were re-appointed for further terms of two years from 2009-2017.

The current members of the Panel are Professor Ken Maher (Chairperson), Peter Mould (Deputy Chairperson), Kerry Clare, Ben Hewett (Acting Government Architect), Professor Richard Johnson, Elizabeth-Ann McGregor, Rachel Neeson, Ché Wall and Professor James Weirick.

The Terms of Reference of the Design Advisory Panel have been amended to allow for an additional member be added to the Panel. To meet the current demands for meetings and to ensure that there is a quorum at each meeting, it is recommended there are ten permanent members of the Panel.

The current term of appointment of members of the Panel has now expired. This report recommends re-appointment of all current members of the Panel for a further two years and the appointment of one additional member, with the Terms of Reference of the Panel being amended accordingly.

Council will be advised of the appointment of the additional member through the CEO Update once the selection process has been completed.

## Recommendation

It is resolved that:

- (A) Council re-appoint the following members of the Design Advisory Panel for a further term of two years: Professor Ken Maher, Peter Mould, Kerry Clare, Professor Richard Johnson, Elizabeth-Ann McGregor, Professor James Weirick, Ché Wall, Rachel Neeson and the NSW Government Architect (Ben Hewett currently acting in the role);
- (B) Council re-appoint Professor Ken Maher as Chairperson of the Design Advisory Panel and Peter Mould as Deputy Chairperson for a further term of two years;
- (C) Council approve the draft Revised Terms of Reference of the Design Advisory Panel, as shown at Attachment C to the subject report; and
- (D) authority be delegated to the Chief Executive Officer, in consultation with the Lord Mayor, to appoint an additional member and any new members of the Design Advisory Panel within the two year term should the need arise.

## Attachments

- Attachment A.** Resolution of Council of June 2017
- Attachment B.** List of Panel Members and Short Biographies
- Attachment C.** Draft Revised Terms of Reference of the Design Advisory Panel (additions in underlined text and deletions in ~~strikerough~~),

## Background

1. In April 2007, Council approved the establishment of the Design Advisory Panel (the Panel). Members of the Panel were appointed for an initial two-year term. Subsequently, Panel members were re-appointed for further terms of two years in March 2009, April 2011, August 2013, December 2015 and June 2017.
2. The current members of the Panel are Professor Ken Maher (Chairperson), Peter Mould (Deputy Chairperson), Kerry Clare, Ben Hewett (Acting NSW Government Architect), Professor Richard Johnson, Elizabeth-Ann McGregor, Rachel Neeson, Che Wall and Professor James Weirick.
3. Previous members of the Panel are Rob Adams, Director City Design and Projects at the City of Melbourne, Maria Atkinson, who resigned following her appointment as the District Commissioner for the Central District at the Greater Sydney Commission and Peter Poulet, former NSW Government Architect.
4. The Panel has provided valuable input on the implementation of important projects, including the implementation of Sydney 2030, Green Square, City Centre transformation projects, City projects, major developments and development applications, underscoring the City's ongoing commitment to excellence in urban design and planning.
5. In March 2019, the Panel participated in the City's "Sydney 2050, your ideas for our city's future" workshop with all of the City's advisory panels - an appropriate continuation of their ongoing input on the implementation of Sydney 2030. It is intended that the Panel will continue to provide input on the development of Sydney 2050.
6. Between July 2017 and May 2018, the Panel provided input to more than 120 development applications, a number of planning proposals and many of the City's major projects including the upgrade of Hyde Park, Green Square Library and Plaza, Gunyama Park Aquatic Centre and the design of Sydney Light Rail project, in particular George Street and Devonshire Street public domain.
7. The Panel's corporate knowledge and continuing involvement in complex projects and implementation of strategies that can only be delivered over a long period of time has been invaluable.
8. On the basis of the value provided to the City by the current membership mix of the Panel, and to ensure continuity in knowledge of complex development applications, urban design strategies, major projects and the impact of the Central Sydney Planning Strategy, it is recommended that all current members of the Panel be re-appointed for a further term of two years.
9. In accordance with part 4 of the Terms of Reference, it is recommended that Professor Ken Maher be re-appointed the Chairperson of the Panel for a further term of two years. It is also recommended that Peter Mould be appointed as Deputy Chairperson.
10. It is noted that Council resolved to establish a Residential Subcommittee of the Design Advisory Panel in December 2017. The Subcommittee has been in operation since September 2018 with Kerry Clare as the chair and crossover member of the Design Advisory Panel.

**Terms of Reference – Proposed Revisions**

11. Terms of Reference for the Panel were developed and approved in 2007. The Terms of Reference were subject to a comprehensive review in 2011 and 2017. In June 2017, Council approved the revised Terms of Reference and delegated authority to the Chief Executive Officer, in consultation with the Lord Mayor, to further revise, as necessary, the Terms of Reference.
12. In recent years, the Panel has dealt with an increasingly large workload and have been meeting, on average, ten times per year. To meet the current demands for meetings and to ensure that there is a quorum at each meeting, it is recommended clause 3.2 of the Terms of Reference be amended from 'nine' to 'ten' permanent members to allow for an additional member be added to the Panel. (Attachment C)
13. It is recommended that the additional member possess urban design / landscape architecture skills and experience.
14. It is recommended authority be delegated to the Chief Executive Officer, in consultation with the Lord Mayor, to appoint the new member of the Panel and any new members (should any Panel members resign) within the two year term.
15. It is also recommended that Clause 5.1 be updated, noting the need for Panel members to comply with the City's Code of Conduct.

**Strategic Alignment - Sustainable Sydney 2030 Vision**

16. Sustainable Sydney 2030 is a vision for the sustainable development of the City to 2030 and beyond. It includes 10 strategic directions to guide the future of the City, as well as 10 targets against which to measure progress. This report is aligned with the following strategic directions and objectives:
  - (a) Direction 1 - A Globally Competitive and Innovative City - The Panel's role assists greatly in the creation of a culture of design innovation and excellence, both within the City and within the relevant professions who contribute to the activities of the City.
  - (b) Direction 7 - A Cultural and Creative City - One member of the Panel, Professor Richard Johnson, also sits on the City's Public Art Advisory Committee enabling a strong co-ordination of urban design and public art planning and implementation.
  - (c) Direction 9 - Sustainable Development, Renewal and Design - The recommendation to re-appoint the Panel aligns with the City's Sustainable Sydney 2030 plan to improve the quality of the City's built environment and the capacity of the City to ensure the 2012 Local Environmental Plan Design Excellence provisions are carried out.

**Organisational Impact**

17. The Panel provides high-level peer review of advice given by City staff on development applications, strategic design and capital works projects. This advice is a cost-effective tool for achieving design excellence. Panel members do not make any decisions and do not hold any delegation from Council to bind it to any position.

**Social / Cultural / Community**

18. The Panel ensures that projects are subject to independent high quality design review.

**Environmental**

19. The Panel reviews projects to ensure sustainable design outcomes are achieved.

**Budget Implications**

20. Sufficient funds have been included in the draft 2019/20 City Design operational budget and further funding allocations have been allocated in the future year forward estimates included in the City's Long Term Financial Plan.

**Relevant Legislation**

21. Local Government Act 1993

**Critical Dates / Time Frames**

22. Re-appointment of Design Advisory Panel members is required now.

**Options**

23. Not proceeding with the re-appointment of the Panel will jeopardise the City's ability to provide timely, high quality advice to proponents and, in turn, Council.

**KIM WOODBURY**

Chief Operating Officer

Bridget Smyth, Design Director

Pauline Chan, Urban Designer

# **Attachment A**

**Resolution of Council of June 2017**

## Resolution of Council

26 JUNE 2017

### ITEM 9.2

#### DESIGN ADVISORY PANEL – REAPPOINTMENT OF MEMBERS

(X002290)

It is resolved that Council:

- (A) re-appoint the following members of the Design Advisory Panel for a further term of two years: Professor Ken Maher; Peter Mould; Kerry Clare; Professor Richard Johnson; Elizabeth-Ann McGregor; Peter Poulet; Professor James Weirick; Ché Wall; and Rachel Neeson;
- (B) re-appoint Professor Ken Maher as Chairperson of the Design Advisory Panel and Peter Mould as Deputy Chairperson for a further term of two years; and
- (C) note the revised Terms of Reference of the Design Advisory Panel (2017), as shown at Attachment C to the subject report.

Carried unanimously.



# **Attachment B**

**List of Panel Members  
and Short Biographies**

## CITY OF SYDNEY DESIGN ADVISORY PANEL MEMBERS



1. **Professor Ken Maher (Chair)**
2. **Peter Mould (Deputy Chair)**
3. **Kerry Clare**
4. **Ben Hewett (Acting NSW Government Architect)**
5. **Professor Richard Johnson**
6. **Elizabeth Ann Macgregor**
7. **Rachel Neeson**
8. **Ché Wall**
9. **Professor James Weirick**

### **Ken Maher AO**, Fellow, HASSELL Studio

---

Ken Maher is well known as a leader and commentator within the architecture profession based in Sydney, a former chairman of HASSELL Ltd and currently founding HASSELL Fellow. Ken is an honorary professor in the Faculty of Built Environment at University of New South Wales, following terms as an adjunct professor and professor in practice. He has a strong interest in the role of design in contributing to public life, and the critical relationship between design and achieving a sustainable future.

Current positions include non-executive director of the CRC for Low Carbon Living Ltd and IBL Ltd (a subsidiary of the Australian Institute of Architects), and director of the ACT City Renewal Authority. He chairs the City of Sydney's Design Advisory Panel, the Sydney Opera House's Design Advisory Panel, and Landcom's Design Advisory Panel, and is also a member of the NSW State Design Review Panel and the ACT National Capital Design Review Panel. Ken serves on UNSW Built Environment Advisory Council and the campus Design Excellence Review Panel. In 2015, he was appointed president of the Australian Sustainable Built Environment Council and continues in this role. Past roles have included serving on the board of Urban Growth NSW, Landcom and the Green Building Council of Australia. In 2016-7 he served as national president of the Australian Institute of Architects following an earlier period as NSW president.

Ken holds a B.Arch (Hons 1), M.Arch (Research) at UNSW, and has undertaken graduate programs in landscape architecture and environmental studies. He is a life fellow of the Australian Institute of Architects, a fellow of the Australian Institute of Landscape Architects, a fellow of the Green Building Council, and an honorary member of the American Institute of Architects.

In 2009, Ken received the Australian Institute of Architects highest accolade, the AIA Gold Medal, and in 2010 he received the Australian Award in Landscape Architecture for his life time contribution to the landscape profession. In 2018 Ken was appointed an Officer of the Order of Australia *"for distinguished service to architecture and landscape design, particularly through urban infrastructure projects, and to environmental sustainability in planning."*

### **Peter Mould, Former NSW Government Architect (Deputy Chair)**

---

Peter Mould was NSW Government Architect from 2006 to 2012. He has over 40 years experience in Australia and overseas in both the private sector and government.

Peter is currently a member of the City of Sydney Design Advisory Panel, the Victorian Design Review Panel, the South Australian Design Review Panel, the Sydney Olympic Park Design Review Panel, the Sydney Opera House Design Advisory Panel, and Transport for NSW Design Review Panel. He also sits on design juries as part of the City of Sydney's design excellence programme.

He has served on NSW Heritage Council, the Central Sydney Planning Committee, and was Deputy President of the NSW Architects Registration Board.

His projects have received numerous awards for architecture, urban design and adaptive reuse. His experience is in the design, documentation and construction of major public architectural and urban design projects. He writes and lectures on architecture with a particular interest in Islamic Architecture.

Peter is a Life Fellow of the Australian Institute of Architects, former Vice President of the NSW Chapter and is an Adjunct Professor at the Faculty of the Built Environment, University of NSW.

### **Kerry Clare, Director, Clare Design**

---

Kerry Clare has been in practice with her partner Lindsay Clare for more than 40 years. Their work includes a diverse range of architectural projects, from major urban and public buildings to small self-sufficient remote houses.

Architecturally, they are consistently acknowledged for a rare combination of design excellence and high-level environmental performance. The RAI A Gold Medal Jury noted that, "Kerry and Lindsay Clare have made an enormous contribution to the advancement of architecture and particularly sustainable architecture, with a strongly held belief that good design and sustainable design are intrinsically linked". Their buildings allow occupants to engage with architecture and the world outside, reinforcing the essential connection with place.

Since starting Clare Design in 1979, Kerry + Lindsay have received 40 state and national awards from the Australian Institute of Architects for public, educational, commercial, housing, public domain and recycling projects. Notable projects include the Docklands Library - Melbourne, Queensland Gallery of Modern Art - Brisbane, the University of the Sunshine Coast Chancellery and the Rockhampton Art Gallery.

Their work has been included in over 150 national and international books, periodicals and publications. Exhibitions of their work have been held in New York, Tokyo, Sydney, Melbourne, Perth, and the 1991 and 2008 Venice Biennale, the 1996 Milan Triennale, the 1996 UIA Congress Barcelona and the Place Makers - Contemporary Queensland Architects at GOMA in 2008. Their Cotton Tree social housing project was selected as one of ten worldwide for inclusion in the 'Ten Shades of Green' exhibition in New York; an exhibition demonstrating architectural excellence and environmental sensitivity organised by the Architectural League of New York.

**Ben Hewett, Acting NSW Government Architect, Government Architect's Office**

---

Ben Hewett is Acting New South Wales Government Architect. The Government Architect's office works across sectors and disciplines to promote good design of the built environment through advocacy, research, collaboration and guidance. In his substantive role as Deputy, Ben leads the strategic functions of office including the development and implementation of "Better placed: an integrated design policy for the built environment of New South Wales".

Previously Ben was the inaugural South Australian Government Architect and Executive Director of the Integrated Design Commission and the subsequent Office for Design and Architecture SA. During this period, Ben was also Director of "5000+, an Integrated Design Strategy for inner Adelaide", which was a national pilot project collaborating across three tiers of government, and with industry, academia and communities, to develop a design-based vision for Adelaide and model for urban development. Prior to these roles, Ben was a Senior Lecturer with the University of Technology Sydney, and has experience in small, medium and commercial architectural practice.

**Professor Richard Johnson AO MBE, Director, Johnson Pilton Walker Pty Ltd**

---

Richard Johnson studied Architecture at UNSW, gaining the RAIA Prize for Design, the RAIA Silver Medal, and the NSW Board of Architects Bronze Medal. He graduated with First Class Honours in 1969. He was awarded a Commonwealth Postgraduate Scholarship and in 1977 was admitted to the degree of Master of Philosophy following study in Town Planning and Urban Design at University College, London. In 1976 he was admitted as a Member of the Order of the British Empire for Public Service in the field of architecture. Richard was appointed as architectural advisor to the Sydney Opera House Trust in 1998. He was awarded the RAIA Gold Medal in 2006, a Life Fellow in 2008, a Life Governor of the AGNSW in 2012, and a distinguished Alumni Award from UNSW in 2013. In 2014 Richard was appointed an AO for distinguished services to architecture, particularly the design of iconic Australian public buildings, to the visual arts and the museum and galleries sector, and to professional associations.

He has worked both nationally and internationally, with his award winning work varying from pavilions at world expos, to detailed museum and museum/gallery exhibition design, embassies, schools, office buildings, hotels and a range of master planning and urban design, landscape design and architectural projects in Australia and China - all involving exceptional design solutions. His interests are broadly spread from architecture and urban design to the design of museums and exhibitions. He is active in the professional and educational arenas and is an active member of the Royal Australian Institute of Architects (RAIA), and has delivered many public lectures, served on Award Juries and is currently a Professor of Architecture at the UNSW.

Richard is a founding Director of the Australian Architecture Association (AAA) and is on the Board of the Australian Technology Park and the Redfern Waterloo Authority. He has been an active member of the RAIA, being a NSW Chapter Councillor in 1992 and 1993. He serves on the City of Sydney Design Advisory Panel and the Public Art Advisory Panel.

---

**Elizabeth Ann Macgregor OBE, Director, Museum of Contemporary Art Australia**

---

Elizabeth Ann has been Director of the Museum of Contemporary Art since 1999. After negotiating a new funding model to allow the MCA to flourish, she has consolidated the MCA's position as one of Sydney's best loved institutions, engaging audiences with living artists. A bold, new and significantly expanded MCA opened in 2012. The redevelopment transformed the MCA, providing spacious new galleries, the National Centre for Creative Learning; public spaces that embrace one of the world's most beautiful locations and a series of site-specific artists' commissions. The MCA is now the highest attended contemporary art museum in the world. Macgregor's contribution to the visual arts has been recognised with an OBE in the Queen's birthday honours list, the Veuve Clicquot Business Woman Award in 2008, the Australia Council Arts Leadership Award in 2011 and the Museums and Galleries NSW Individual Achievement Award in 2012. In 2013 she was named by the Australian Financial Review as one of Australia's 100 top women of Influence and in 2016 one of Australia's True Leaders. In 2015 she was given an Honorary Fellowship of the NSW Branch of the Australian Council for Educational Leaders and in 2016 she was made the NSW Creative Laureate. She is President of the International Council for Museums of Modern and Contemporary Art and a member of Board of UNICEF Australia.

---

**Rachel Neeson, Director, Neeson Murcutt Architects Pty Ltd**

---

Rachel Neeson formed Neeson Murcutt Architects Pty Ltd with her late partner Nicholas Murcutt in 2004. Based in Sydney, the practice pursues a range of project types across Australia – houses, housing prototypes, multiunit housing, public and community projects, sports facilities, schools – and has been awarded the highest professional accolade across these diverse categories.

Rachel studied architecture at the University of Sydney, graduating with the University Medal in 1993. She was awarded the Board of Architects 2002 Byera Hadley Travelling Scholarship and completed a Masters of Architecture in Barcelona. She is currently Professor of Practice at the University of New South Wales, and serves on design advisory panels for the City of Sydney and Landcom.

Neeson Murcutt Architects was joined by Dr Stephen Neille, formerly of Perth-based practice Pandal and Neille, in 2016.

---

**Ché Wall, Director, Flux Consultants**

---

Ché is internationally recognised as one of the world's leading green building practitioners and advocates, with a raft of award winning projects and to his name. Ché is a Director of Flux Consultants - a consulting and advisory business providing world leading sustainable design and delivery expertise on sustainable buildings, urban regeneration, green infrastructure projects and related strategy development. Ché's extensive background in professional practice, business leadership, not for profit organisations and policy development in the areas of sustainability provide a unique compliment of technical expertise, commercial astuteness and practical delivery experience. Ché currently provides expert advisory services on the delivery of sustainability on significant projects to a number of government agencies including the Barangaroo Delivery Authority, Urban Growth NSW for the Bays Precinct and the Royal Botanical Gardens and Centennial Park Trust. Ché also serves as lead expert for buildings with the Climate Bond Initiative in London and was lead author for the Climate Bond property standard, which has been used for certification on Climate Bonds with a value of over US\$1bn.

A graduate in Landscape Architecture from Harvard Graduate School of Design, James Weirick taught at the Boston Architectural Center; the University of Massachusetts, Boston; the University of Canberra; and Royal Melbourne Institute of Technology before his appointment as Professor of Landscape Architecture at the University of New South Wales in 1991. He is currently Director of the Graduate Program in Urban Development & Design (MUDD) Program, and has conducted international urban design studios in Beijing, Tokyo, Hangzhou, Nagoya, Venice, Berlin, Barcelona, Valparaíso, Chicago, Boston and New York. His research interests include the history of architecture, landscape architecture and urbanism, with an emphasis on the 'politics of design', particularly the work of Walter Burley Griffin, the history of Canberra, and the urban landscape of Sydney. He is actively engaged in issues of contemporary urbanism throughout Australia as an educator, critic, and commentator.

Professor Weirick has served on the Environment Board of the Royal Australian Institute of Architects (NSW); the Parliamentary Zone Advisory Panel, National Capital Authority, Canberra; the Urban Design Advisory Committee, NSW Department of Urban Affairs & Planning; the Gateways Design Review Panel, City of Sydney; the Campus 2010 Design Review Panel, University of Sydney; the Design Review Panel, Sydney Olympic Park Authority, the Barangaroo Design Excellence Review Panel; and the Campus Design Advisory Panel, University of New South Wales. He currently serves on the Design Advisory Panel of the City of Sydney.

Professor Weirick has served on City of Sydney Design Competitions for the Andrew 'Boy' Charlton Pool and the Ian Thorpe Aquatic Centre, and as a City representative on a number of Design Excellence/Design Alternatives Competitions including the Hilton Hotel redevelopment; Balfour Park Master Plan (Carlton United Brewery site); the Westfield Sydney Centrepoint Project; the Goodsell Building Redevelopment, 8 Chifley Square; commercial tower & retail podium projects at 161 Castlereagh Street and 420 George Street; The Residence, Hyde Park; redevelopment of the Sydney Law School, King Street; residential development at 130 Elizabeth Street; six residential projects in the Green Square Urban Renewal Area; and educational buildings on Broadway for the University of Technology, Sydney. He was named a 'Built Environment Exemplar' in the Year of the Built Environment 2004. He received the President's Award of the Australian Institute of Landscape Architects (NSW Group) in 1999 and the President's Prize of the Australian Institute of Architects (NSW Chapter) in 2012.

# **Attachment C**

**Draft Revised Terms of Reference of the  
Design Advisory Panel - 2019  
(with amendments shown in underlined text  
(additions) and strikethrough (deletions))**

# TERMS OF REFERENCE

## CITY OF SYDNEY DESIGN ADVISORY PANEL



### **The Council of the City of Sydney**

Town Hall House  
456 Kent Street  
SYDNEY NSW 2000

Reference: **S053470**

©Copyright 2007

The Council of the City of Sydney

All rights reserved. No part of this work shall be reproduced, translated, modified, reduced, transmitted or stored in any form or by any means without prior permission of the Council of the City of Sydney.



# TERMS OF REFERENCE

## CITY OF SYDNEY DESIGN ADVISORY PANEL

### 1. Purpose

---

- 1.1 The Design Advisory Panel (the Advisory Panel) has been established to provide the officers of the City of Sydney Council (the City) with high level independent expert advice and expertise on urban design, architecture, landscape architecture, art and sustainability. The advice is to inform the assessment by Council officers of development applications with a view to promoting the delivery of world class urban design, architecture and sustainable and inclusive design in Sydney's buildings and public spaces. The advice is to inform the assessment process. It is not the purpose of the Panel to have any role in the process of determination of development applications by the elected representatives of Council.
- 1.1 These terms of reference set out the rules that members of the Panel must follow.

### 2. Advice to the City

---

#### 2.1 Scope

The Design Advisory Panel will, from time to time be requested by the City to provide advice in relation to the matters referred to in 1.1 above including:

- (a) significant urban design, architecture and landscape architecture projects intended to be undertaken by the City;
- (b) significant urban design, architecture and landscape architecture projects intended to be undertaken by the private sector;
- (c) development applications and projects that may have a significant public domain, public interest, heritage impact and foreshore impact;
- (d) the Sydney 2030 project particularly regarding the future of the City's urban design and public domain quality;
- (e) the development and implementation of the City's planning and public domain policies as they affect urban design, architecture and landscape architecture;
- (f) how the City's public and private projects can achieve the City's stated environmental commitments and design excellence;
- (g) the procurement of design services;
- (h) the Central Sydney Planning Strategy and the City's planning controls including Local Environmental Plans and Development Control Plans.

## 2.2 Reference to Certain Material

The Advisory Panel will make recommendations and provide advice to the City on the matters referred to it having regard to the material forwarded to it in each case and in every case having regard to the City's adopted policies including the City's:

- (a) Sustainable Sydney 2030
- (b) Local Environment Plans and Development Control Plans;
- (c) Corporate and Strategic Plans;
- (d) Contract Policies;
- (e) Public Domain Policies;
- (f) Public Art Policies;
- (g) Environmental Management Plans;
- (h) Access Policies.

## 2.3 Panel provides advice only - No Delegation of Power of functions

- (a) The Advisory Panel is legally constituted pursuant to individual contracts between the City and its members to supply advisory services to the City.
- (b) It is not a Council Committee established under the Local Government Act.
- (c) It has no power or authority, whether by delegation, agency or otherwise to exercise any function, right, duty or power of the City, whether under a statute or other law, as a landowner or in any other capacity.

## 3. Members

---

- 3.1 The City will seek to engage individuals who are highly recognised in their profession and who:
  - (a) have a demonstrated experience and knowledge of urban design, architecture, landscape architecture, sustainable design and the arts;
  - (b) possess the relevant skills and experience to provide independent expert advice.
- 3.2 The City will seek to engage individuals so that the Advisory Panel will consist of at least three and not more than ~~nine~~ ten permanent members.
- 3.3 Permanent members will be engaged for an initial term of two years and reviewed subsequently every two years.

- 3.4 If a permanent member resigns from the Advisory Panel, the City may appoint a replacement member who has similar expertise and skills. The appointment may be made by the Chief Executive Officer, in consultation with the Lord Mayor, based on recommendations made by the Design Director in consultation with the Director City Planning, Development and Transport.
- 3.5 Panel members will be paid for one hour of preparation and review time and sitting fees for attending the Panel meetings in accordance with their individual contracts.

#### **4. Chairperson**

---

- 4.1 The City will nominate and appoint a chairperson of the Advisory Panel for an initial term of two years and reviewed subsequently every two years.
- 4.2 If the position of chairperson becomes vacant by reason that the Chairperson resigns from the position by written notice to the City, the City will appoint another chairperson. The new chairperson may be an existing or new member of the Advisory Panel.
- 4.3 The Chairperson or their nominated representative from the panel will accept appointment to the City's Public Art Advisory Committee.
- 4.4 The Deputy Chair will replace the Chairperson when they are not available at meetings. If both the Chairperson and the Deputy Chair are unavailable, the Chair will nominate another Advisory Panel member to chair the meeting in advance.

#### **5. Conduct and Disclosures**

---

- 5.1 Members must act lawfully and with honour, integrity and professionalism and comply with the City's Code of Conduct.
- 5.2 Without limiting 5.1 Members who have a pecuniary or non-pecuniary interest in any matter with which the Panel is concerned must disclose the nature of the interest as soon as practicable.
- 5.3 A member who has a pecuniary interest or a significant non pecuniary interest in a matter with which the panel is concerned must not be present at any meeting of the panel at which the matter is being discussed or considered. A significant non pecuniary interest generally relates to interests of close family relations, close business or friendships or strong affiliations with an organisation, sporting body or club.
- 5.4 A member who has a non-pecuniary interest in a matter with which the panel is concerned where the interest is not significant and does not present a conflict of interest must declare the interest to the meeting and advise the meeting why it is not significant and why it therefore does not present a conflict of interests.
- 5.3 A member who has a pecuniary interest or a significant non pecuniary interest in a matter with which the panel is concerned must not be present at any meeting of the panel at which the matter is being discussed or considered. A significant non pecuniary interest generally relates to interests of close family relations, close business or friendships or strong affiliations with an organisation, sporting body or club.

- 5.4 A member who has a non-pecuniary interest in a matter with which the panel is concerned where the interest is not significant and does not present a conflict of interest must declare the interest to the meeting and advise the meeting why it is not significant and why it therefore does not present a conflict of interests.
- 5.5 A disclosure about a pecuniary or non-pecuniary interest must be recorded in the minutes of the meeting.

## **6. Meeting Procedures**

---

- 6.1 The Advisory Panel will meet at such place and time as notified to the Members by the City. It is expected that it will meet approximately ten times a year on dates and at places to be set out in advance for each year.
- 6.2 The City may call an extraordinary meeting of the Advisory Panel with at least three days written notice to all members.
- 6.3 The Chairperson will preside as Chairperson at every meeting of the Advisory Panel, unless they are unavailable, in which case, clause 4.4 applies.
- 6.4 If the Chairperson is not present within ten minutes after the time appointed for the meeting, the members may choose one of their number to be Chair for the purpose of the meeting.
- 6.5 Councillors and staff of the City may attend the meetings as observers.
- 6.6 The City will take minutes of the Advisory Panel meetings. The minutes will include the following:
- (a) a statement of the status and purpose of the meeting
  - (b) attendance;
  - (b) apologies;
  - (c) declarations of interest;
  - (d) a record of all recommendations made by the Advisory Panel.
- 6.7 Meeting minutes will be reviewed and approved for circulation to the Panel by the Panel Chair. The City will circulate minutes to all members and all members must confirm the accuracy of the minutes.

## **7. Consideration by the Panel and Providing Advice**

---

- 7.1 Individual Panel members may be engaged by Council to provide advice to Council staff on specific projects and are required to report back to the full Panel on their review. The Panel may also recommend a member reviews a specific project and reports back to the full Advisory Panel.
- 7.2 The approved meeting minutes are the report of the Advisory Panel.
- 7.3 Meeting minutes will include Advice Sheets on specific projects reviewed by the Panel. Advice sheets will be made available to the City and to relevant proponents.

- (e) Summaries of the advice provided by the Panel in relation to particular applications may be included in Council reports.

## **8. Review**

---

- 8.1 The terms of reference and operation of the Advisory Panel may be reviewed by the City from time to time and will be reviewed after an initial term of two years.

## Item 4.

### Project Scope - City Centre Playground

File No: X005861

#### Summary

This report describes the concept design for the new City Centre Playground at Cook and Phillip Park (City Centre Playground). The new playground will be located in the southern portion of Cook and Phillip Park, near William Street.

The new City Centre Playground will provide the City's first inclusive play space of this size in the heart of the City. It will serve as an important child-friendly recreational space for locals and visitors, addressing the current undersupply of such spaces in the city centre.

The design creates a distinctive play space and caters for the needs of users across varying ages and abilities. It will offer equitable access through the site; sufficient amenity for people to stay and enjoy the space, and play experiences that consider a variety of user needs, providing a play space that everyone can get to, move through and enjoy together.

City of Sydney's Social Sustainability Discussion Paper (March 2016) identifies that ensuring the CBD is welcoming and accessible for people of all ages and abilities is a critical focus for the City, particularly given the growing numbers of families with children living in the city. It aims to improve accessibility for children and families.

The Social Sustainability Policy and Action Plan titled 'A City for All' was adopted in October 2018. The policy makes a commitment to delivering a new inclusive play space in the heart of our city, noting the popularity of the Darling Quarter family playground demonstrates the demand for more free play spaces for visitors and residents in the city centre

The project is also guided by the City's Open Space, Sports and Recreation Needs Study, adopted in 2016 and forms a key deliverable in the City's Inclusion (Disability) Action Plan, 2017-2021.

This report provides a summary of responses received during consultation, an overview of the current concept design, and recommended scope of work.

## Recommendation

It is resolved that Council:

- (A) endorse the design scope for the new City Centre Playground at Cook and Phillip Park, as described in the subject report and shown in the drawings in Attachment B to the subject report, for progression to Design Development and preparation of construction documentation; and
- (B) note the estimated project forecast re-phasing as detailed in Confidential Attachment E to the subject report.

## Attachments

- Attachment A.** Location Plan
- Attachment B.** Concept Design Plan
- Attachment C.** Exhibition Panels - Concept Design
- Attachment D.** Community Feedback Summary Report (Concept Design)
- Attachment E.** Financial Implications (Confidential)

## Background

1. The Open Space, Sports and Recreation Needs Study (2006; reviewed and adopted by Council in November 2016) identifies increasing children's play opportunities in the city centre as a key driver influencing the future planning of open space. It proposes to investigate the feasibility of providing a unique city centre play environment that caters for all abilities and is a destination venue for both local children and visitors to the city centre. It identifies Cook and Phillip Park as a possible location as it provides an opportunity to co-locate with existing pool / recreation facilities, café, and car parking.
2. City of Sydney's Social Sustainability Discussion Paper (March 2016) identifies that ensuring the CBD is welcoming and accessible for people of all ages and abilities is a critical focus for the City, particularly given the growing numbers of families with children living in the city. It aims to improve accessibility for children and families.
3. The Social Sustainability Policy and Action Plan titled 'A City for All' was adopted in October 2018. The policy makes a commitment to delivering a new inclusive play space in the heart of our city, noting the popularity of the Darling Quarter family playground demonstrates the demand for more free play spaces for visitors and residents in the city centre
4. A review of city centre open space was carried out, which assessed a number of potential sites against the following criteria:
  - (a) central location;
  - (b) sufficient space available for a playground of significant size; and
  - (c) no conflicts (heritage, masterplan direction, current usage, events or other programming).



Potential Site	Review Comment
First Fleet Park (SHFA owned)	Site serves as a key event space. SHFA did not support the proposal for a playground in this location
Hyde Park	Heritage overlays Already heavily utilised Events programming conflicts Keep as open space as per masterplan direction
Belmore Park/Harmony Park	Lack of available space for a playground of significant size Consider more central location
Cook and Phillip Park	Substantial open space in close proximity to the city centre Space available to support significant playground without compromising overall public space offering Currently underutilised – opportunity for activation of the space Co-location and synergy with Pool, Museum, Bodhi restaurant and other amenity nearby Good catchment location for city centre and city east residents

5. On analysis of the open space options within the city centre, it was determined that Cook and Phillip Park provides the best opportunity to meet current and future community play needs, given that it is currently underutilised, its size and proximity to a number of major cultural and educational institutions.
6. The City engaged Cred Consulting (December 2016) to undertake extensive public consultation and market research to:
  - (a) gather and evaluate current visitation to the Cook and Phillip Park precinct, potential attractors to the playground, and target groups; and
  - (b) explore the park and site opportunities and constraints at Cook and Phillip Park with internal and external stakeholders including schools, organisations, and local residents.

7. The market research confirmed that Cook and Phillip Park is currently underutilised and that a playground located there would attract a range of users, including local children, city visitors and educational groups. It also identified opportunities and ideas to re-imagine the park as a city playground.
8. Several potential layouts and locations for the playground within Cook and Phillip Park were tested, based on projects of comparable size and cost, to inform the project scope and consultancy brief. The endorsed project scope includes the design and construction of a unique, inclusive City play environment in Cook and Phillip Park. The playground is to be inclusive and cater for all abilities and ages, providing a vibrant destination for both local children and visitors to the City, and is to include a new amenities block.
9. The City engaged Aspect Studios in August 2018 as the Head Design Consultant on the project. The proposed concept design for the City Centre Playground is the culmination of research, testing of the brief, incorporation of consultation feedback and design refinement.
10. The concept phase included consultation with local primary schools, KU childcare, the Australian Museum and the community to gain an understanding of what potential users of the playground and adjacent spaces would like to see included in the design.
11. The concept design has incorporated the consultation feedback, comments from key stakeholders and feedback from the Design Advisory Panel, and the Inclusion Advisory Panel.
12. The City engaged an Indigenous Cultural Consultant in April 2019 to work with the Head Design Consultant during the design phase to celebrate the site's Indigenous narrative. This consultant will lead a presentation to the City's Indigenous Advisory Panel mid-late 2019.

## Key Implications

### Strategic Alignment - Sustainable Sydney 2030 Vision

13. Sustainable Sydney 2030 is a vision for the sustainable development of the City to 2030 and beyond. It includes 10 strategic directions to guide the future of the City, as well as 10 targets against which to measure progress. This plan is aligned with the following strategic directions and objectives:
  - (a) Direction 4 - A City for Walking and Cycling

The project will expand recreation and access opportunity for the residents and visitors to the city centre. It will serve as a destination on a multi-stop itinerary, while also providing sufficient amenity for a longer stay.
  - (b) Direction 5 - A Lively and Engaging City Centre

The Playground will activate the currently underutilised parklands at Cook and Phillip Park, providing amenity and inclusive recreational opportunities for locals and visitors. It will also provide opportunities for outdoor education for small groups, and offer outdoor picnic and play space to groups of visitors to nearby sporting, cultural and educational institutions.

(c) Direction 6 - Vibrant Local Communities and Economies

The proposal will address an undersupply of child-friendly spaces in the city. It will provide greater and improved public use and enjoyment of the currently underutilised parkland, through the provision of a playground and supporting amenity, for children and their carers.

(d) Direction 7 - A Cultural and Creative City

Cook and Phillip Park is located in close proximity to some of Sydney's major cultural and educational institutions. The site possesses a rich heritage, and the proposal includes opportunities to interpret past uses through the design of the new playground. The City Centre Playground design will draw upon this narrative, providing opportunities for education and celebration of Sydney's Indigenous and Colonial history and culture.

(e) Direction 9 - Sustainable Development, Renewal and Design

This project incorporates new areas for ecology and opportunities for habitat, and highlights water that historically ran through the site. The concept integrates water sensitive urban design principles into the playground design to improve the sites stormwater quality and offer play value.

### Organisational Impact

14. Cook and Phillip Park is classified as an 'Iconic' park due to its historical significance and location in the CBD with good links to public transport. The potential for high visitor numbers means that any new playground will need to be serviced to the highest levels.
15. The development of the playground will require a commitment to potentially expand the current Cook and Phillip Park management regime to respond to the maintenance needs of the new playground, furniture, amenities, and more complex landscape to foster the successful growth and establishment of new planting.

### Risks

16. Early geotechnical studies have identified some heavy metal contamination in various locations in Cook and Phillip Park, including the site of the proposed playground. An environmental consultant has been engaged to provide advice for the environmental management of the park, and will be responsible for the preparation of a Remediation Action Plan which will guide the design development, construction and ongoing management of the playground.

### Social / Cultural / Community

17. The new playground and adjacent spaces will be a setting for informal social activity. It will provide a much-needed outdoor recreational space for local children living nearby, as well as visitors to the city centre.
18. The proposal will provide an inclusive place that caters to many different ages and abilities, so that both children and their carers can stay and enjoy the playground.
19. The concept design features step-free access across the core play offering, new access paths linking the different play zones, improved access to key entry points, hardstand areas, and accessible and ambulant toilet cubicles.

20. Inclusive play experiences include a partially raised sand play area, elevated boardwalks of sufficient width for children using a wheelchair to enjoy the nature-based play zone at the bottom of the site. Custom slides are also of sufficient width to accommodate multiple users at once, and the height allows for the easy lifting of children onto the slides. Two basket swings allow children to be lifted in, and supported in the swing, and the raised 'treehouse' play structures incorporate various play elements and experiences at ground level.
21. Approximately 1,600 children who live in the area will have access to a playground within 800 metres from their home. Over 500,000 children per year who visit cultural institutions in the area will have a location and amenities available for stops, including lunchtime.
22. The proposal includes opportunities to interpret the rich heritage and past uses through the design of the new playground.
23. The proposal will achieve the positive activation of Cook and Phillip Park, increasing safety for school groups and other users.

### **Environmental**

24. The proposal increases the habitat value of the parklands, through new areas of planting, extended canopies and introduction of a dry creek bed. In particular, areas of native under storey planting and grasses will provide habitat for small birds and increase biodiversity.
25. The proposal improves water quality in the park through the dry creek bed swale system and passive irrigation to the planting within this area.
26. The design supports public transport usage by considering the location of its key entry points in the broader context of public transport connections.

### **Economic**

27. The proposal will positively impact nearby business and institutions, such as the Australian Museum, by providing a new city centre destination and supporting amenity for users of the space to stay longer. Longer duration of stays (made possible by provision of amenities) and higher occurrence of repeat visitors will increase economic activity in the area.
28. The location of playground and amenities in close proximity to cultural institutions will increase visitation by school and family groups to the institutions. Co-location with the aquatic centre may also increase visitation to the pool.

### **Budget Implications**

29. Remediation of the site is required to ensure that the site is fit for purpose as a playground.
30. The project budget implications are outlined in full in Confidential Attachment E to the subject report.

## Relevant Legislation

31. Environmental Planning and Assessment Act 1979.
32. A Review of Environmental Factors will be completed in accordance with the Environmental Planning and Assessment Act 1979 for the park.. The amenities block will be subject to a Part 5 Planning Assessment.
33. Local Government Act 1993.
34. Attachment E contains confidential commercial information which, if disclosed, would: confer a commercial advantage on a person with whom Council is conducting (or proposes to conduct) business.
35. Discussion of the matter in an open meeting would, on balance, be contrary to the public interest because it would compromise Council's ability to negotiate fairly and commercially to achieve the best outcome for its ratepayers.
36. Procurement of consultants and contractors for this project will be in accordance with the Local Government Act 1993.

## Critical Dates / Time Frames

37. The proposed program for the project is:
  - Scoping Report to Council June 2019
  - Design Development Mid-late 2019
  - Tender March 2020
  - Commence construction (12+ months) Late 2020

## Options

38. The implications of not proceeding with the proposal are as follows:
  - (a) Does not address current or future community need for increased children's play opportunities in the city centre.
  - (b) Fails to deliver on the City's social sustainability and recreation objectives to improve liveability and play opportunities in the city centre.
  - (c) Fails to deliver on the City's SS2030 Strategies to build a lively and engaging city centre, vibrant communities and economies, and to create a cultural and creative city.
  - (d) Fails to deliver specific action item in the City's Inclusion (Disability) Action Plan 2017-2021.

**Public Consultation**

- 39. The Community Consultation report is included in Attachment D. It contains feedback, concerns and suggestions raised by the community during consultation. The consultation feedback and resultant concept design will be incorporated into a Review of Environmental Factors for the project, and addressed in the design moving forward.
- 40. From 5 February to 1 March 2019, community feedback was sought on the concept design. The consultation was an opportunity for stakeholders and the community to provide feedback on the proposed design.
- 41. Consultation activities included online engagement, a letter to residents, on site project signage in the park, and face to face engagement at a pop-up session in the park. The Sydney Your Say webpage received 19 responses.
- 42. Specific suggestions included a safety fence around the playground (4 responses), requests to consider sensory and physical accessibility (2 responses). The refined concept provides a fenced playground and a key objective for the project is to deliver an inclusive play space that caters to different ages and abilities, allowing people to partake in play together. Physical access to and within the playground are a primary consideration for the concept, and will continue to inform the design.
- 43. A summary table of public consultation feedback, and how the proposal will respond, is included below:

<b>Comment</b>	<b>Response/Action</b>
Don't include cubby houses (and other covered spaces like tunnels) as they will be used by homeless, for drug use/drinking  (6 responses)	We will continue to address these concerns through rigorous testing of sight lines, materiality, lighting and other Crime Prevention through Design measures. The proposal will activate the park, drawing more visitors to the park and increasing passive surveillance of the site.
Not an ideal place for a playground (homelessness, anti-social behaviour and crime in the area)  (2 responses)	Cook and Phillip Park is well-utilised as a thoroughfare. The proposal will further activate the park, drawing more visitors to the park and increasing passive surveillance of the site.
Sandpit - risk of syringes, broken glass etc.  (2 responses)	The playground will be subject to a daily sweep for needles, broken glass and other dangerous items.  The City will look at additional measures to prevent littering or misuse at night.

Comment	Response/Action
Bottom of Cook and Phillip Park is damp, wet after rain (2 responses)	The proposal seeks to capitalise on the topography and natural systems of the site by providing appropriate play opportunities. The proposal includes a dry creek bed, elevated board walks and balance logs in this location.
Manage dog poo (3 responses)	The playground will be fenced, triggering a 'no dogs' regulation.
Don't take what's left of the general public's space (1 response)	The playground is restricted to the southern side of Cook and Phillip Park. There is a good supply of adjacent public open space, including Hyde Park and the Domain. By comparison, Cook and Phillip Park offers little amenity to its visitors and is currently underutilised.
Need to have vision of children in city playgrounds (2 responses)	The playground will offer improved sight lines and access throughout, and the materiality of play elements will be tested against this.
Don't want trees removed for playground (2 responses)	The proposal will seek to avoid the removal of mature trees in Cook and Phillip Park. Several additional shade trees are proposed for planting throughout the play space.

44. Further updates on the project will be given via the following channels:

- (a) Updates on the [sydneyyoursay.com.au](http://sydneyyoursay.com.au) and City of Sydney web pages;
- (b) Notifications sent to local residents, business owners and people who have made submissions on the concept design; and
- (c) During construction, the selected contractor will be required to provide a community liaison officer on-site to assist all stakeholders with day to day operational construction related issues.

### AMIT CHANAN

Director, City Projects and Property

Emma Cosgrove, Design Manager

Sophie Spinks, Delivery Manager

# **Attachment A**

<h2><b>Location Plan</b></h2>
-------------------------------



# Location Plan



# **Attachment B**

**Refined Concept**

# New City Centre Playground

Concept Plan | 1:250 @ A1

## Key | Playground features

- 1 Nature play
- 2 Sandpits
- 3 'Treehouse' play structures
- 4 Picnic Lawn
- 5 Group slides
- 6 Mounds
- 7 Stepping Stone Trail
- 8 Swings
- 9 Planted dry creek bed
- 10 Climbing ropes and grips
- 11 Raised timber boardwalks
- 12 Balancing trail
- 13 Sharing circle/learning space
- 14 Central accessible pathway
- 15 Playground fence
- 16 Existing concrete wall
- 17 Playground amenities
- 18 Playground entry

## Surfaces

Concrete	Turf
Asphalt	Typical mass planting
Decomposed granite	Sensory mass planting
Sand	Creek bed planting
Mulch - Softfall	Existing softscape
Mulch - Horticultural	Existing tree proposed to be relocated
Rubber softfall	Existing tree proposed to be retained
	New tree proposed

## Hardworks

- New Bench Seat
- New Shade Canopy
- New Seating Deck
- Existing element to be removed



# **Attachment C**

**Public Exhibition Panels**



# City Centre Playground

## CONTEXT

The City of Sydney is proposing a new playground at Cook and Phillip Park. The playground will be an inclusive place in the CBD and will provide an exciting and enriching place for everyone to enjoy. The playground will be a safe, playful and educational space where children are encouraged to be physically active and explore their environment. Opportunities for a diverse and challenging range of play experiences—dynamic, exploratory, social and imaginative, are being explored. The current concept includes sand play, slides, climbing nets, balance beams, stepping stones, swings, a dry creek bed and cubby houses. There will also be plants, an open lawn, amenities, shaded areas and seating in the playground.

## DESIGN PRINCIPLES

### Social & Inclusive

The new playground will be a place for everyone to come together through play. It will be an inclusive space for children to get active, take risks, and learn from each other in large or small groups.

### Sustainable

The playground will be a place for children to be excited and curious about nature, encouraging the next generation of advocates for the environment. New and retained plants and trees, as well as water sensitive urban design principles, will improve the ecological value of the existing park.

### Educational

Opportunities for formal and informal learning experiences will be scattered throughout. A variety of themes are explored, from Indigenous heritage, ecological and geological themes as well as colonial history.

### Sustains Interest

The playground will include a range of equipment-based play elements and less structured play spaces, creating opportunities for a wide variety of games and experiences to occur within the playground. This will ensure that children are excited about returning to the playground again and again.



## Existing Site



Looking west, towards the existing large fig and swimming pool



Looking west, towards the existing large fig, swimming pool and city skyline



Looking north, towards the existing concrete well and the cathedral

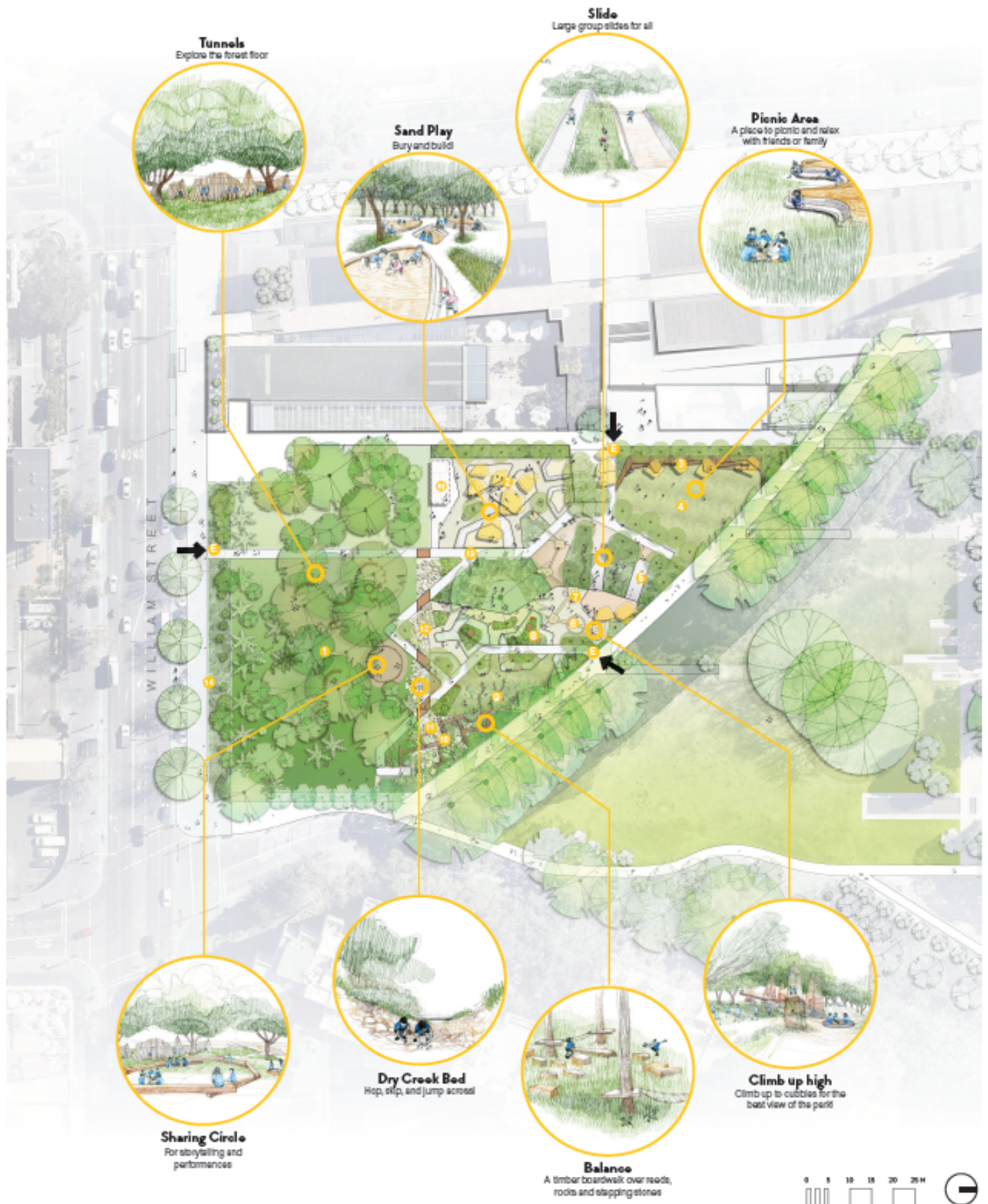


Standing beneath the existing tree canopy, looking down towards Yurong Parkway



Looking at the base of the existing fig tree

ASPECT Studios + AILEEN SAGE ARCHITECTS

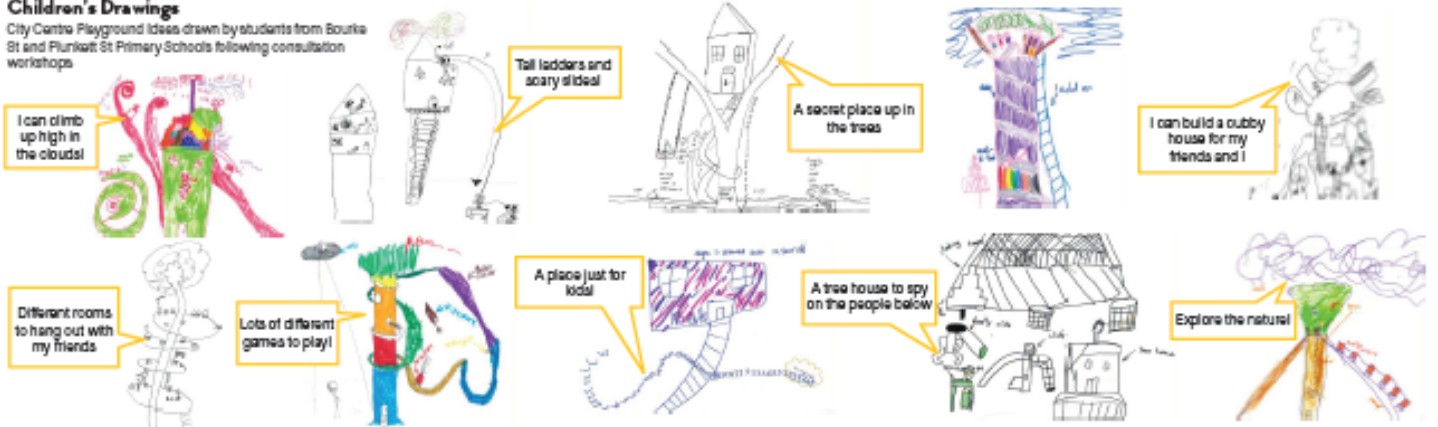


Key					
1	Nature play beneath existing tree canopies	7	Raised cubbies with tube slides, frame poles and climbing ropes	10	Wide, wheel-chair accessible ramped pathway
2	Sandpits, including accessible raised sandpits	8	Timaced mounds with sensory planting and tunnels below	11	Child-safe fence to entire playground perimeter
3	Timaced seating for families and groups	9	Climbing ropes and grips on existing mounding	12	Playground amenities
4	Open lawn and new shade trees	10	Raised timber boardwalk	13	Playground entry with child-safe gate
5	Group slides	11	Balancing branches, logs and stones in planting		
6	Group basket swings	12	Planted dry creek bed		



**Children's Drawings**

City Centre Playground Ideas drawn by students from Bourke St and Plunkett St Primary Schools following consultation workshops



**Planting Palette**



**Material Palette**



# **Attachment D**

<p><b>Community Feedback Summary Report (Concept Design)</b></p>
--



# Engagement Report

City of Sydney  
Town Hall House  
456 Kent Street  
Sydney NSW 2000



## New city centre playground at Cook + Phillip Park

March 2019



# Engagement report

## New city centre playground at Cook + Phillip Park

### Contents

Engagement report.....	1
Summary.....	2
Background.....	2
Engagement Summary.....	3
Key findings.....	4
Activities to support and promote the consultation.....	6

## Summary

From 5 February to 1 March 2019, we asked the community for feedback on a concept design for a new playground at Cook + Phillip Park, Sydney. The consultation was an opportunity for stakeholders and the community to provide feedback on the proposed design. Consultation activities included online engagement, a letter to residents, project signage in the park, and face to face engagement at a pop-up session in the park. The Sydney Your Say webpage attracted strong interest and the City received **19** formal submissions.

This report outlines the community engagement activities that took place to support the consultation and summarises the key findings from the consultation.

Early consultation was conducted with two local schools and a range of nearby stakeholders, including the Australian Museum. Feedback was incorporated into the concept designs we placed on public exhibition.

## Background

The City of Sydney Council is building a new City Centre Playground in Cook + Phillip Park. The new playground will deliver an important new play space for the City's residents and visitors, and address an undersupply of child-inclusive places in the City. It will also activate the park, and provide an inclusive and educational place, where children of all ages and abilities can explore and engage with their environment.

# Engagement Summary

## Purpose of the engagement

The purpose of the engagement was to:

- Gather feedback from stakeholders and the community about the new city centre playground to help inform any amendments to the proposed concept design
- Determine the level of satisfaction with the proposed concept design

## Outcomes from the engagement

### 1. Sydney Your Say

The Sydney Your Say page was visited 547 times during the consultation period and consultation documents were downloaded 285 times. This result indicates a high level of interest and that a significant number of people were engaged over the consultation period.

### 2. Submissions

We received **19** submissions/feedback forms via Survey Monkey during the public exhibition period.

# Key findings

## Repeated topics

Some topics were repeated across several submissions. These topics were presented as concerns, suggestions and/or requests. Repeated topics are listed below.

Repeated topics	Submission number
Include a fence around playground for safety from roads and to separate dogs and children	9, 10, 11, 18
Don't include cubby houses (and other covered spaces like tunnels) as they will be used by homeless, for drug use/drinking	8, 9, 10, 11, 12, 18
Not an ideal place for a playground (homelessness, anti-social behaviour and crime in the area)	2, 18
Sandpit - risk of syringes, broken glass etc.	3, 18
Bottom of C+P damp, wet after rain	6, 18
Manage dog poo	10, 11, 16,
Ensure sensory and physical accessibility is considered	4, 14
Don't take what's left of the general public's space	16
Need to have vision of children in city playgrounds	13, 18
Don't want trees removed for playground	17, 18

The survey also asked respondents to comment on several elements proposed for the playground including nature play, amenities (toilets, bubblers), safety, planting, seating and areas to rest, and other. Repeated topics raised in comments about some elements are listed below.

Playground element	Topic	Submission number
Amenities (toilet, bubblers)	Toilets needed	4, 6, 8, 15
Safety	Fencing around playground	4, 8, 9, 11, 16, 19
Planting	Need shade	7, 15

## Reference to other parks and playgrounds

Respondent's referred to a number of parks and playgrounds to support comments in their submission.

Other parks and playgrounds referred to in submissions	Submission number
Queens Park	4
Albert Sloth Reserve, Darlinghurst	9
Boorowa playground	11
Prince Alfred Park playground.	11
The Ian Potter Children's Wild Play Garden, Centennial Parklands	13, 18
Campbell Street Playground, Surry Hills	9

A letter was received from the Strata Committee of Park Lane Residential Towers objecting to the creation of the new playground. The Strata object to the loss of open public space and suggested the City instead upgrade the existing park close by.

# Activities to support and promote the consultation

## a. Early engagement activities

### i. Bourke St and Plunkett St primary school students

In late 2019, ASPECT Studios and the City facilitated workshops with Bourke Street Primary School and Plunkett Street Primary School to discuss the new city centre playground. During the workshops, students were asked to complete four different types of activities. Each activity was chosen to better understand the children’s preferences for various typologies of play experience. Feedback from the students at these workshops contributed to the concept design.

### ii. Engagement with key stakeholders

Pre-design consultation meetings were held in 2017 with the following stakeholders:

Art Gallery of NSW (AGNSW)

CatholicCare (St Mary’s Cathedral)

PCYC

KU Childcare Centre

Bodhi Restaurant

Sydney Living Museum

In December 2018, the City had face-to-face meetings with the Australian Museum and KU Childcare Centre to provide an update on the concept design and seek feedback. PCYC asked to be updated when the concept was further refined. St Mary’s Cathedral was contacted for a project update meeting, but did not respond to the City’s invitation.

The following peak inclusivity groups were notified that the concept design was available for viewing online, and invited to provide feedback via the SYS web page:

- Ability Links
- Accessible Arts
- Aboriginal Disability Network NSW
- Australian Network on Disability
- Beyond Blue
- Brain Injury Association NSW
- Deaf NSW
- Carers NSW
- Association for Children with Disabilities
- Down syndrome NSW
- Gig Buddies
- Guide Dogs NSW
- Multicultural Disability Advocacy Association NSW
- NSW Centre for Intellectual Disability

- People with Disability Australia
- Physical Disability Council of NSW
- Vision Australia
- Spinal Cord Injuries Australia
- Transport for NSW – Disability Inclusion
- 2RPH – Radio
- Cerebral Palsy Alliance

It was also recommended that the City reach out to children with a disability and their carers, via an organisation such as Creativity Inc. The project team intends to carry out this consultation during the next phase of the design.

## **b. Sydney Your Say webpage**

A Sydney Your Say webpage <https://www.cityofsydney.nsw.gov.au/council/your-say/new-city-centre-playground-proposal> was created. The page included an electronic copy of the proposed concept design and other key information about the consultation.

## **c. Online feedback form via Survey Monkey**

The community and stakeholders were able to give feedback using an online feedback form. A link to the feedback was provided on the Sydney Your Say website.

## **d. Sydney Your Say e-News**

The consultation was included in the Sydney Your Say February e-Newsletter (4,138 subscribers)

## **e. Notification letter**

A letter was posted to residents, inviting them to give feedback on the proposal. 251 letters were sent.

## **f. Notification board**

Three project boards were installed at Cook + Phillip Park, inviting people visiting the playground to give feedback on the proposal.

## **g. Pop-up consultation at Cook + Phillip Park**

The project team engaged with the community about the proposed design at Cook + Phillip Park on Saturday 23 February 2019. The project team engaged with approximately 50 community members. The pop up was an opportunity for the community to speak to the project managers and designers about the proposal. The community was encouraged to complete the survey on Sydney Your Say.



Document is Restricted

**Item 5.****Project Scope - Small Parks Upgrade - Observatory Hill Park Pathways, Millers Point****File No: 2019/222522****Summary**

This report outlines the proposed scope for the upgrade of Observatory Hill Park, Millers Point. As part of the small parks and playgrounds improvement program, the main pathways at Observatory Hill Park were identified for renewal.

The proposal for Observatory Hill Park includes pathway improvement works, consolidation of park furniture including bins and seating, and improved definition of pedestrian and vehicular access around the Sydney Observatory. The detailed design works will be undertaken with consideration to the heritage requirements of the site, the retention and protection of the existing fig trees and coordination with the Sydney Observatory masterplan which is being prepared by Museum of Applied Arts and Science (MAAS) concurrently.

The concept plans were presented to the community between 29 March and 26 April 2019 and exhibited on the City's website. Community feedback was broadly in support of the proposal. These community suggestions will be incorporated into the design during design development. These will include a variety of seating locations, new bubbler, and new habitat planting.

## Recommendation

It is resolved that Council:

- (A) endorse the scope of work for improvements to Observatory Hill Park as described in the subject report and shown in the concept design as Attachment B to the subject report, for design development, approvals, tender and construction;
- (B) endorse the allocation of additional funds to complete the project as outlined in Confidential Attachment C to the subject report; and
- (C) note that the transfer of funds from the Future Years Open Space budget and forward estimates to meet the additional funding requirement of the project, as outlined in Confidential Attachment C to the subject report, will occur as part of the Quarter 4 capital works funding roll over process which will be presented to Council in August 2019.

## Attachments

- Attachment A.** Location Plan
- Attachment B.** Community Consultation Plan
- Attachment C.** Financial Implications (Confidential)

## Background

1. The City has an ongoing small parks and playgrounds improvement program for parks that are in need of upgrade or enhancement works, replacement of end of life play equipment, and to provide appropriate facilities for local residents.
2. Observatory Hill Park was identified for upgrade due to the current condition of the pathways across the site, conflict between pedestrian and vehicular activity and the need to consider the ongoing management of the significant trees on the site.
3. Observatory Park is owned by the NSW Government, part of Lot 7003, DP 1071940. A reserve trust was established pursuant to section 92(1) of the Crown Lands Act 1989- Observatory Hill Park (D500044) Reserve Trust. Council has been appointed trustee of the Observatory Hill Park Trust.
4. Observatory Hill Park is approximately 2ha in area located on Upper Fort Street, Millers Point. Observatory Park is listed as a local heritage item and is located within the Millers Point/Dawes Point Conservation Area (C25) on the Sydney Local Environment Plan 2012 (LEP). The conservation area is identified as being of state significance and is included on the State Heritage Register (SHR) (Item No. 016182). There are a number of highly significant heritage items in the vicinity.
5. Heritage consultants are advising on the project particularly in relation to appropriate form and layout of paths and elements, materials, potential archaeological impacts or sensitivities as well as integration with the observatory precinct. These considerations will continue through design development and construction of any works. All proposals will be subject to Heritage Council approval.
6. The historic Sydney Observatory is located within the centre of the park. The park is an iconic destination that provides expansive views over Millers Point to Sydney Harbour. Large established fig trees and open lawn areas are the dominant landscape character. The main paths around the park are asphalt with concrete kerbs and are in poor condition due to service vehicle use, erosion and impacts from tree roots.
7. The park currently has a diverse user group including tourists, school children, wedding parties, local residents, fitness groups and city workers on lunch break. Additional groups frequent the park to visit the National Trust and Sydney Observatory. The park is also a popular spot for larger community events such as the New Year's Eve Fireworks.
8. Issues identified for the project include;
  - (a) conflicts between pedestrians and service vehicles on the main path. Also high service vehicle volumes impacts when emptying multiple rubbish bins along the main pathway.
  - (b) poor condition of path pavements including trip hazards and raised edges
  - (c) poor location of furniture including accessibility, and significant compaction and erosion around the limited seating

- (d) impacts of pavements and compaction on tree roots of significant fig trees
  - (e) conflicts between pedestrians and vehicles, particularly at the observatory entry area and entry road to the National Trust
  - (f) erosion issues around the paths on the slope to the harbour bridge stairs.
9. The Harbour Village North Public Domain Study was adopted by Council in 2012. Within this study a masterplan for the Observatory Hill Park which provided a broad framework for future works on the site.
10. There are three projects being managed adjacent to the site;
- (a) Fort Street High School - managed by Department of Education
  - (b) Sydney Harbour Bridge cycleway - managed by RMS
  - (c) Sydney Observatory Masterplan - managed by the Museum of Applied Arts and Science (MAAS)
11. The City is working with the Museum of Applied Arts and Science, MAAS to ensure appropriate integration of the pathway works.
12. A concept design has been prepared that sets the overall layout and form of the proposed improvements. These include::
- (a) Main Observatory path:
    - (i) repave path with appropriate stone and or permeable material. Address and mitigate trip hazards with surfaces and edging to ensure flush transitions and accessibility;
    - (ii) provide additional seating on inside of path to address erosion and accessibility issue of existing seats. Maintain seating in lawn areas where appropriate;
    - (iii) relocate bins to entry points to minimise garbage truck service requirements on pedestrian paths; and
    - (iv) treatments adjacent existing fig trees to minimise root impacts and improve root conditions including- no excavation and permeable materials.
  - (b) Observatory entry area/Upper Fort Street:
    - (i) implement shared zone to reduce traffic speeds and increase pedestrian amenity;
    - (ii) remove roundabout and concrete paving and install appropriate unit paving treatment to denote shared zone;
    - (iii) raise pavement flush with adjacent surfaces;
    - (iv) locate bins to enable vehicular servicing from road area; and
    - (v) improve adjacent landscape treatments particularly around fig root zones.

- (c) Paths from Watsons Road:
    - (i) install edge swales to capture water runoff and prevent erosion.
  - (d) Watson Street /Harbour Bridge access:
    - (i) raised paving or Paving treatment to slow vehicle speeds; and
    - (ii) improve integration with adjacent pathways including Sydney Harbour Bridge Southern Cycle Way Bike Path and Agar Steps.
  - (e) Access road to National Trust:
    - (i) extend shared zone treatment. Raise pavements to be flush with park and install appropriate unit paving treatment to denote shared zone.
  - (f) General:
    - (i) maintain the open grass areas and protect the mature trees;
    - (ii) consider ongoing management of trees, impacts of pedestrian and vehicle use across the site. All treatments around existing trees to prioritise tree health; and
    - (iii) use materials appropriate for the heritage context.
13. The following tree management is proposed as part of the park works:
- (a) retain and protect existing fig trees; and
  - (b) work with arborist to establish appropriate scope, materials and construction methodology to maximise tree root health.

## Key Implications

### Strategic Alignment - Sustainable Sydney 2030 Vision

14. Sustainable Sydney 2030 is a vision for the sustainable development of the City to 2030 and beyond. It includes 10 strategic directions to guide the future of the City, as well as 10 targets against which to measure progress. This plan is aligned with the following strategic direction and objective:
- (a) Direction 4: A City for walking and cycling - Provides local recreational activities and encourages residents to walk and cycle to local parks.
  - (b) Direction 9 - Sustainable Development, Renewal and Design - this project will provide improved open space infrastructure for the public supporting a variety of user groups in an improved landscape setting.

### Organisational Impact

15. This upgrade works will provide improved passive recreation facilities. The rectification of failing assets represent a removal/mitigation of risk to the city. The assets will require ongoing maintenance.

**Risks**

16. Risks to not implementing the scope of these works is potential failure of infrastructure and risk to the community.
17. Heritage advice is being sought to provide review on the current proposal include approval advice and preparation of a Heritage Impact Statement. Subject to Heritage Council approval, the delivery program dates outlined above may be impacted.

**Social / Cultural / Community**

18. The project will provide improved amenity and passive recreation facilities for local residents and visitors to the City, encouraging healthy activity and social interaction.
19. The project will also improve the material quality to better reflect the historical significance of the site and better integrate the operations of the precinct as a whole.

**Environmental**

20. The upgrade of Observatory Hill Park includes a range of environmentally sustainable elements to improve the environmental performance of the park. The key elements include:
  - (a) maintain and maximise landscape areas and protect mature trees;
  - (b) re-use of park furniture where appropriate;
  - (c) minimise offsite removal of materials;
  - (d) maximise use of Permeable Paving; and
  - (e) ecological planting

**Budget Implications**

21. There are insufficient funds in the draft 2019/20 capital works budget and future year forward estimates, which has been on exhibition during May and early June 2019.
22. Funding will be sought from the existing allocation in the 10 year capital works budget and future year forward estimates for Future Capital Projects – Open Spaces Renewal, as part of the 2018/19 Quarter 4 budget 'revote' process which is the subject of an upcoming Council paper.
23. Current cost estimates and financial implications are detailed in Confidential Attachment C.

## Relevant Legislation

24. Environmental Planning and Assessment Act 1979 (NSW) - the site is listed as State Significant and will require Heritage Office approvals.
25. Local Government Act 1993 (NSW) - under the Act, a council's charter is to provide adequate, equitable and appropriate services and facilities for the community and to ensure that those services and facilities are managed efficiently and effectively.
26. Disability Discrimination Act 1992 (Cth) - the city has a responsibility to ensure, as far as practicable, that people with disabilities have the same rights to access services and facilities.
27. Companion Animals Act 1998 No 87 (NSW) - Division 1 Section 13 - Responsibilities while dog in public place.
28. Attachment C to the subject report contains confidential commercial information which, if disclosed, would:
  - (a) confer a commercial advantage on a person with whom Council is conducting (or proposes to conduct) business; and
  - (b) prejudice the commercial position of the person who supplied it.
29. Discussion of the matter in an open meeting would, on balance, be contrary to the public interest because it would compromise Council's ability to negotiate fairly and commercially to achieve the best outcome for its ratepayers.

## Critical Dates / Time Frames

30. Current Program Dates
  - Community Consultation Complete      April 2019
  - Council Approval of Concept Design      June 2019
  - Heritage Approvals      June - September 2019
  - Complete Final Design      June - September 2019
  - Tender      September - November 2019
  - Construction Period      January 2020 - July 2020

## Options

31. No action taken - this option is not recommended as the existing parks have a number of associated risks and compliance issues with regard to access.
32. Improvement works to be undertaken in accordance with the asset renewal brief and as recommended in this subject report.



## Public Consultation

33. Consultation was undertaken as a two part process; pre-consultation and public consultation/exhibition.
34. Pre-consultation notification letter/email was issued to the following local stakeholders to notify them of the project and provide a link to a pre-consultation survey:
  - (a) Crown Lands NSW;
  - (b) Millers Point, Dawes Point, The Rocks, and Walsh Bay Resident Action Group ;
  - (c) National Trust;
  - (d) Sydney Observatory / Museum of Applied Arts and Science;
  - (e) FJMT (Sydney Observatory Architects);
  - (f) Environment Centre; and
  - (g) Fort Street School.
35. The concept design was on exhibition from the 29 March to 26 April 2019. Nine submissions were received including five via Survey Monkey and four via Sydney your Say email address, with the majority in support of the proposed works.
36. The public consultation/exhibition involved the following:
  - (a) a letter sent to 560 local residents about the concept design and inviting them to provide feedback;
  - (b) stakeholder email sent to key stakeholders, inviting them to give feedback on the concept design proposal. The email was sent to:
    - (i) Crown Lands NSW;
    - (ii) Millers Point, Dawes Point, The Rocks, and Walsh Bay Resident Action Group ;
    - (iii) National Trust;
    - (iv) Sydney Observatory / MAAS;
    - (v) FJMT (Sydney Observatory Architects);
    - (vi) Environment Centre; and
    - (vii) Fort Street School.
  - (c) A webpage on SydneyYourSay showing the plans for consultation from 29 March to the 26 April 2019. One hundred and one individual users viewed the page and 48 users downloaded the plans.
  - (d) Four Have your Say A2 panels were installed in the park notifying park users of the proposed works, providing contact details of the Design Manager and a web address to the SydneyYourSay page;

37. Key feedback on the Concept Design included:
- (a) four submissions raised concerns around the conflict between pedestrians, vehicles movement and parking in the general precinct and particularly on Upper Fort Street;
  - (b) three submissions did not want the bins relocated to the entry/exit points of the park;
  - (c) one submission requested recycling bins and bubblers be installed;
  - (d) three submissions referred to the proposed relocation of the seats, one requested that the seats are retained in the grass area;
  - (e) three submissions raised concerns around the existing parking arrangements on Upper Fort Street and Watson Road;
  - (f) two submissions recommended providing areas of habitat planting;
  - (g) two submissions noted that the fence on the Sydney Observatory site obstructs views and is inconsistent with the heritage of the site.
38. In response to this consultation the proposals will be refined during Design Development to include:
- (a) a combination of accessible seating on the path and in lawn areas.
  - (b) installation of water bubbler
  - (c) provision of habitat planting in discreet locations;
  - (d) extension of the proposed raised threshold to slow traffic near the entry to the Sydney Observatory.

**AMIT CHANAN**

Director City Projects and Properties

Helen Rogers, Design Manager

# **Attachment A**

<h2><b>Location Plan</b></h2>
-------------------------------

# Observatory Hill Park Pathways

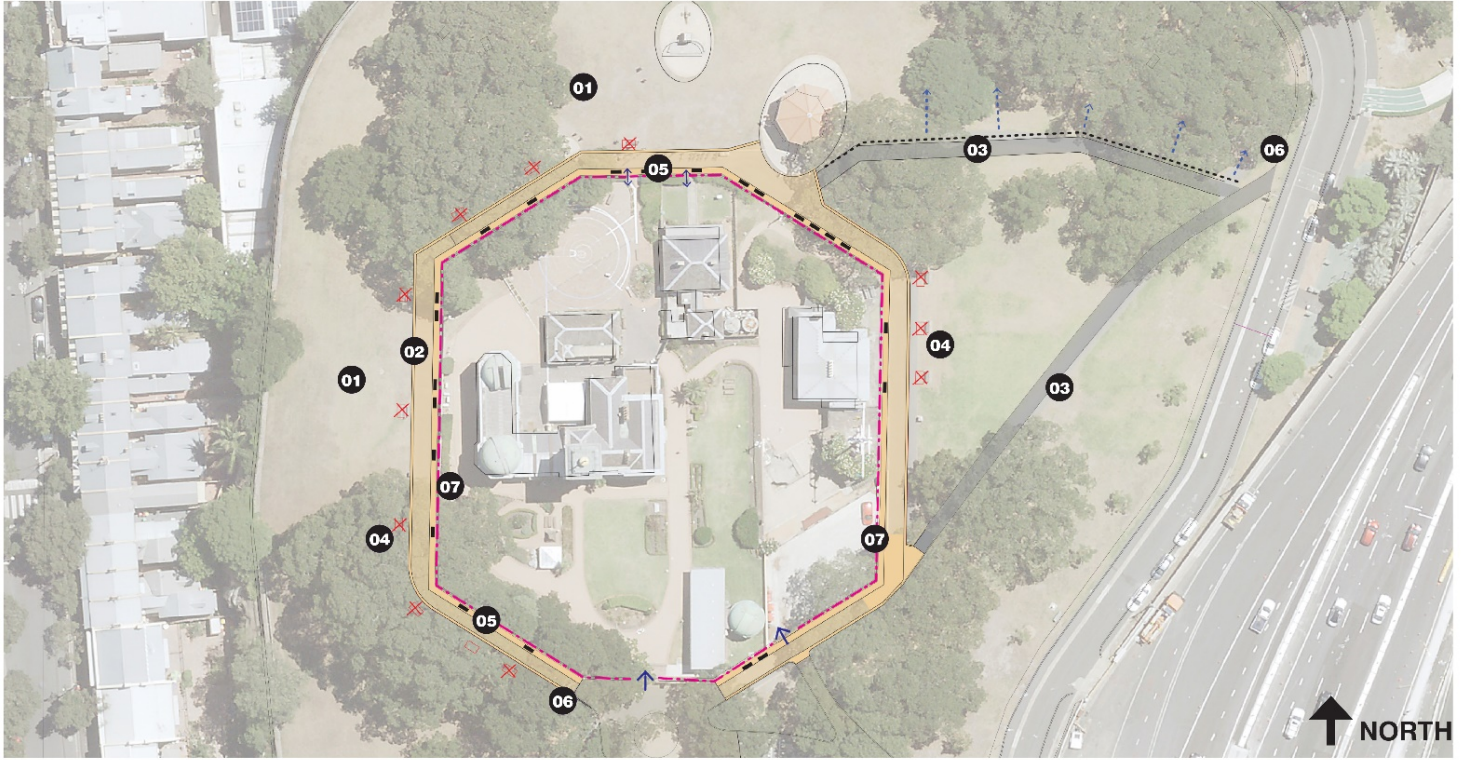
## Location Plan



# **Attachment B**

## **Community Consultation Plan**






## Proposed Works



- 01** Maintain the open grass and protect the mature trees
- 02** Upgrade the perimeter path around the Sydney Observatory for better access, including new paving, level with adjacent grass
- 03** Fix lawn erosion and trip hazards on paths from Observatory to Upper Fort St
- 04** Move the bench seats to limit erosion and improve accessibility

- 05** Re-use existing seats where suitable and provide additional seats on path
- 06** Move bins to entry and exit points
- 07** Work with Sydney Observatory to improve the fence

### Key

-  Existing asphalt path- rectification works only.
-  Perimeter Path
-  New Seat
-  Remove Existing Seat
-  Fence Location

Document is Restricted

## Item 6.

### Project Scope – Small Parks Upgrade - Womerah Gardens, Darlinghurst

File No: X019561.003

#### Summary

This report outlines the proposed scope of works for the upgrade of Womerah Gardens, located at 25A Womerah Avenue Darlinghurst. Womerah Gardens has been identified for renewal as part of the small parks and playgrounds improvement program.

Concept plans were presented to the community between 29 March and 26 April 2019 and exhibited on the City's website. Community feedback was broadly in support of the proposal, with community suggestions incorporated into the concept where possible. This includes a change in maintenance of existing hedges, additional planting, a review of park signage and provision of bin bags for dog walkers.

The proposals for Womerah Gardens include wall rectification works, improved access and circulation through and within the park. As well as, renewed turf, planting across the site and provision of a variety of additional seating opportunities.

#### Recommendation

It is resolved that Council:

- (A) endorse the scope of work for improvements to Womerah Gardens as described in the subject report and shown in the concept design as Attachment B to the subject report, for progression to preparation of construction documentation, tender and construction, and;
- (B) note the estimated project forecast as outlined in Confidential Attachment C to the subject report

#### Attachments

- Attachment A.** Location Plan
- Attachment B.** Consultation Concept Plan
- Attachment C.** Financial Implications (Confidential)



## Background

1. The City has an ongoing small parks and playgrounds improvement program for parks that are in need of upgrade or enhancement works, replacement of end of life play equipment, and to provide appropriate facilities for local residents.
2. Womerah Gardens was identified for an upgrade due to the park's overall condition, including the rectification of an existing low brick retaining wall to the park's eastern boundary affected by adjacent tree roots.
3. Womerah Gardens is a local park located on a triangular piece of land between Womerah Avenue and Craighend Street, Darlinghurst. The gardens were constructed after several terrace houses were removed for the construction of the Kings Cross tunnel in the late 1960's
4. The park is approximately 937 square metres and is characterised by a formal circular lawn area sunken into a bowl shape and large planting areas to the northern side as a buffer to the Kings Cross tunnel. There are two entries from Womerah Avenue and Craighend Street with paved areas and some seating
5. Currently there is no path access between the two paved areas, and the western entry is narrow with poor sight lines. Materials consist of brick paving, brick edging, sandstone walls and a timber park seats.
6. The planting palette consists of an eclectic mix of exotic and native species of varying success. A large Camphor Laurel tree, *Cinnamomum camphora* at the eastern side of the park provides significant amenity and shade. A significant number of small Golden Robinia trees, *Robinia pseudoacacia 'frisla'* are in failing condition.
7. The park is a well-used local green space on a popular pedestrian route between south Darlinghurst and Kings Cross and Kings Cross station. It is popular with dog owners. There is no formal play equipment.
8. The concept design sets the overall layout and proposes a number of minor works to improve park access, circulation, safety landscape quality and amenity. The proposals include:
  - (a) repair and replace cracked walls, stairs and mitigate trip hazards;
  - (b) widen the main western entry and provide additional seating to improve accessibility sightlines and amenity. Minor regrading and new handrails to stairs for accessibility compliance;
  - (c) upgrade the eastern plaza area, with repaired paving, steps and walls with new seating. Provide a new linking brick path to provide an on grade connection between the east and west areas to consolidating the park as a unified space. Provide additional seating adjacent to the lawn area;
  - (d) reduce the slopes of the lawn area to increase the useable green space. Returf where required;
  - (e) new understorey planting throughout of more robust planting, including increased habitat planting to enhance the park biodiversity
  - (f) new stone edging for the garden beds and sloped areas to contain mulch run off;

- (g) provide a variety of seating opportunities (sun/shade) that encourages social interaction;
  - (h) a water bubbler with dog bowl;
  - (i) re-use, recycle and refurbish elements and materials. New materials to be simple, robust and of high quality reflecting the local neighbourhood character; and
  - (j) meet the requirements of the City of Sydney Design Codes and Australian Standards.
9. There are currently 19 Trees within the park and the trees vary in size and condition. On both street edges surrounding the park there are additional 14 street tree plantings.
10. The following tree management and planting is proposed as part of the park works:
- (a) the removal of seven Golden Robinia (*Robinia pseudoacacia 'Frisia'*) within the park which are deemed to be in failing condition;
  - (b) the planting of seven replacement trees (small-medium deciduous trees, species to be confirmed during design development); and
  - (c) the planting of new shrubs and ground covers throughout the garden.

## Key Implications

### Strategic Alignment - Sustainable Sydney 2030 Vision

11. Sustainable Sydney 2030 is a vision for the sustainable development of the City to 2030 and beyond. It includes 10 strategic directions to guide the future of the City, as well as 10 targets against which to measure progress. This plan is aligned with the following strategic direction and objectives:
- (a) Direction 4: A City for walking and cycling – this project provides local recreational activities and encourages residents to walk and cycle to local parks.
  - (b) Direction 9 - Sustainable Development, Renewal and Design - this project will provide improved open space infrastructure for the public supporting a variety of user groups in an improved landscape setting.

### Organisational Impact

12. The upgrade works will provide improved passive recreation facilities. The rectification of both the wall and paths of failed assets represent a removal/mitigation of risk to the City. The assets will require ongoing maintenance.

### Risks

13. Risks to not implementing the scope of these works is potential failure of infrastructure and risk to the community.

### Social / Cultural / Community

14. The project will provide improved passive recreation facilities that can be used by all members of the local community, encouraging healthy activity and social interaction.

**Environmental**

15. The upgrade of Womerah Gardens includes a range of environmentally sustainable elements to improve the environmental performance of the park. The key elements include:
  - (a) re-use of park furniture where appropriate; and
  - (b) supplementary planting of low-water use plants.

**Budget Implications**

16. There are sufficient funds in the current year capital budget and future year forward estimate. Current cost estimates and financial implications are detailed in Confidential Attachment C.

**Relevant Legislation**

17. Local Government Act 1993 (NSW) - under the Act, a council's charter is to provide adequate, equitable and appropriate services and facilities for the community and to ensure that those services and facilities are managed efficiently and effectively.
18. Disability Discrimination Act 1992 (Cth) - the City has a responsibility to ensure, as far as practicable, that people with disabilities have the same rights to access services and facilities.
19. Companion Animals Act 1998 No 87 (NSW) - Division 1 Section 13 - Responsibilities while dog in public place.
20. Attachment C to the subject report contains confidential commercial information which, if disclosed, would:
  - (a) confer a commercial advantage on a person with whom Council is conducting (or proposes to conduct) business; and
  - (b) prejudice the commercial position of the person who supplied it.
21. Discussion of the matter in an open meeting would, on balance, be contrary to the public interest because it would compromise Council's ability to negotiate fairly and commercially to achieve the best outcome for its ratepayers.

## Critical Dates / Time Frames

### 22. Current Program Dates

- Community Consultation April 2019
- Council Approval of Concept Design June 2019
- Complete Final Design July 2019
- Tender July-November 2019
- Construction January 2020-July 2020

## Options

23. No action taken - this option is not recommended as the existing park has a number of associated risks and compliance issues with regard to access.
24. Improvement works to be undertaken in accordance with the asset renewal brief and as recommended in this subject report.

## Public Consultation

25. Consultation was undertaken as a two part process; pre-consultation and public consultation/exhibition.
26. Pre-consultation notification letter/email was issued to the following local stakeholders to notify them of the project and provide a link to a pre-consultation survey.
- (a) Darlinghurst Residents' Action Group. No submissions were received.
27. The concept design was on exhibition from 29 March to 26 April 2019. Eight submissions were received, including four via Survey Monkey and four via Sydney your Say email address, with the majority in support of the proposed works.
- (a) The public consultation/exhibition involved the following: A letter sent to 110 local residents about the concept design and inviting them to provide feedback;
- (b) Stakeholder email sent to key stakeholders, inviting them to give feedback on the proposal. The email was sent to:
- (i) Darlinghurst Residents' Action Group. No submissions were received.
- (c) A webpage on SydneyYourSay showing the plans for consultation from 29 March to 26 April 2019. Seventy four individual users viewed the page and thirty one users downloaded the plans.
- (d) Two Have your Say A2 panels were installed in the park notifying park users of the proposed works, providing contact details of the Design Manager and a web address to the SydneyYourSay page;

28. Key feedback included:
- (a) Proposed concept design including path works, provision of seating, upgraded lawn area was well supported across most submissions;
  - (b) Three submissions requested consideration of the noise associated with the traffic on Craigend Street as part of the works suggestions included change in maintenance of the hedge on Craigend Street, additional planting and a physical noise barrier
  - (c) Three submissions requested works be completed at Arthur Reserve including new planting and modification to the existing water feature;
  - (d) One submission had concern over the removal of the Golden Robinia trees;
  - (e) Two submissions proposed provision of play opportunities for children including playground and skate park;
  - (f) One submission highlighted need for provision for dog walkers including regulatory signage and bin bags;
  - (g) One submission highlighted the need for further historical interpretation to be incorporated into the signage
29. In response to this consultation the following is proposed to be incorporated into the proposed works:
- (a) change in maintenance to the hedge on Craigend Street to allow plants to maximise height;
  - (b) additional tree planting where appropriate;
  - (c) review of park signage to include additional heritage interpretation
  - (d) provision of bin bags on the proposed bins;
  - (e) In response to the requested works at Arthur Reserve, the asset condition of the reserve is considered good so is not currently scheduled for works in the next five years.

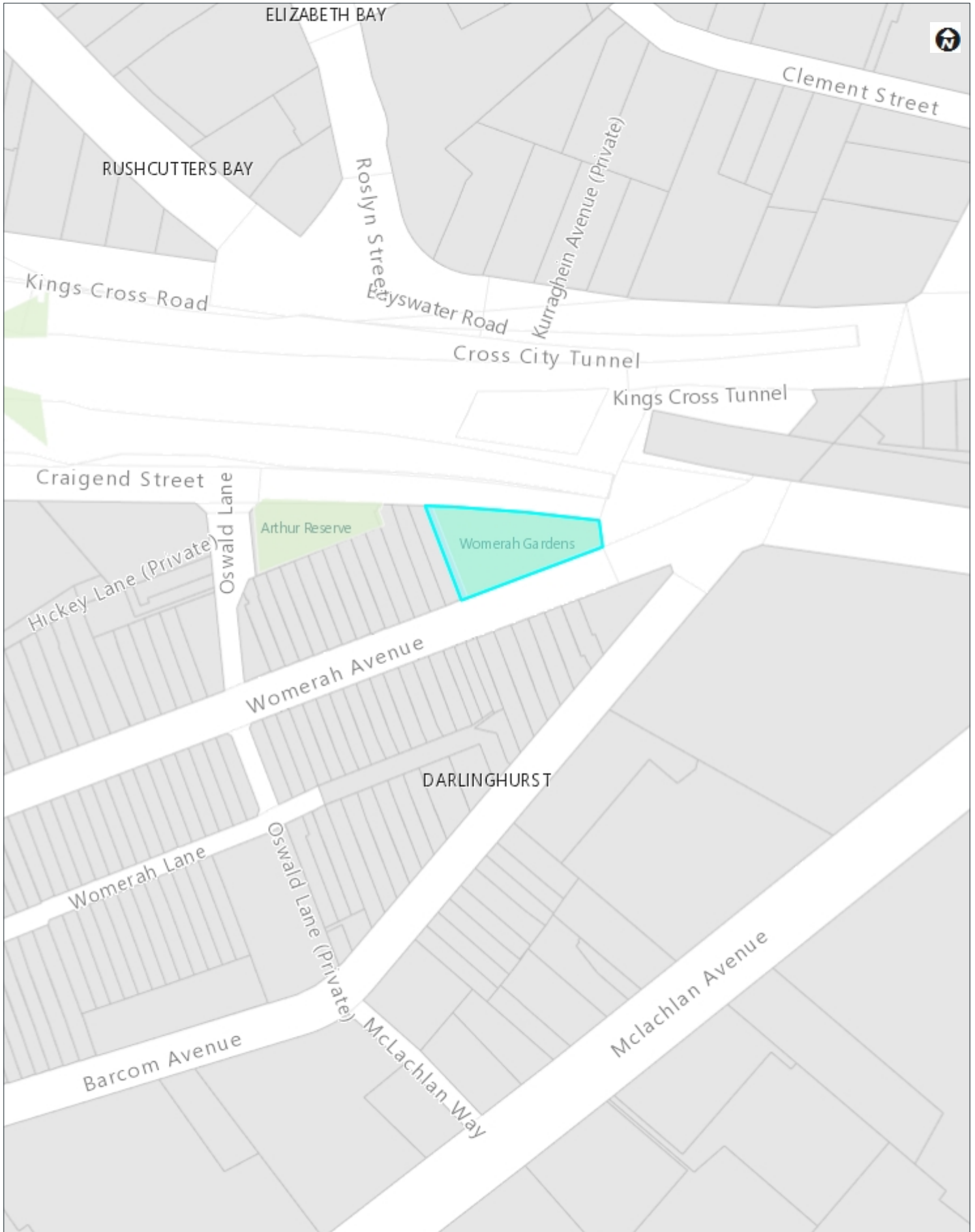
**AMIT CHANAN**

Director City Projects and Properties

Helen Rogers, Design Manager

# **Attachment A**

<h2><b>Location Plan</b></h2>
-------------------------------

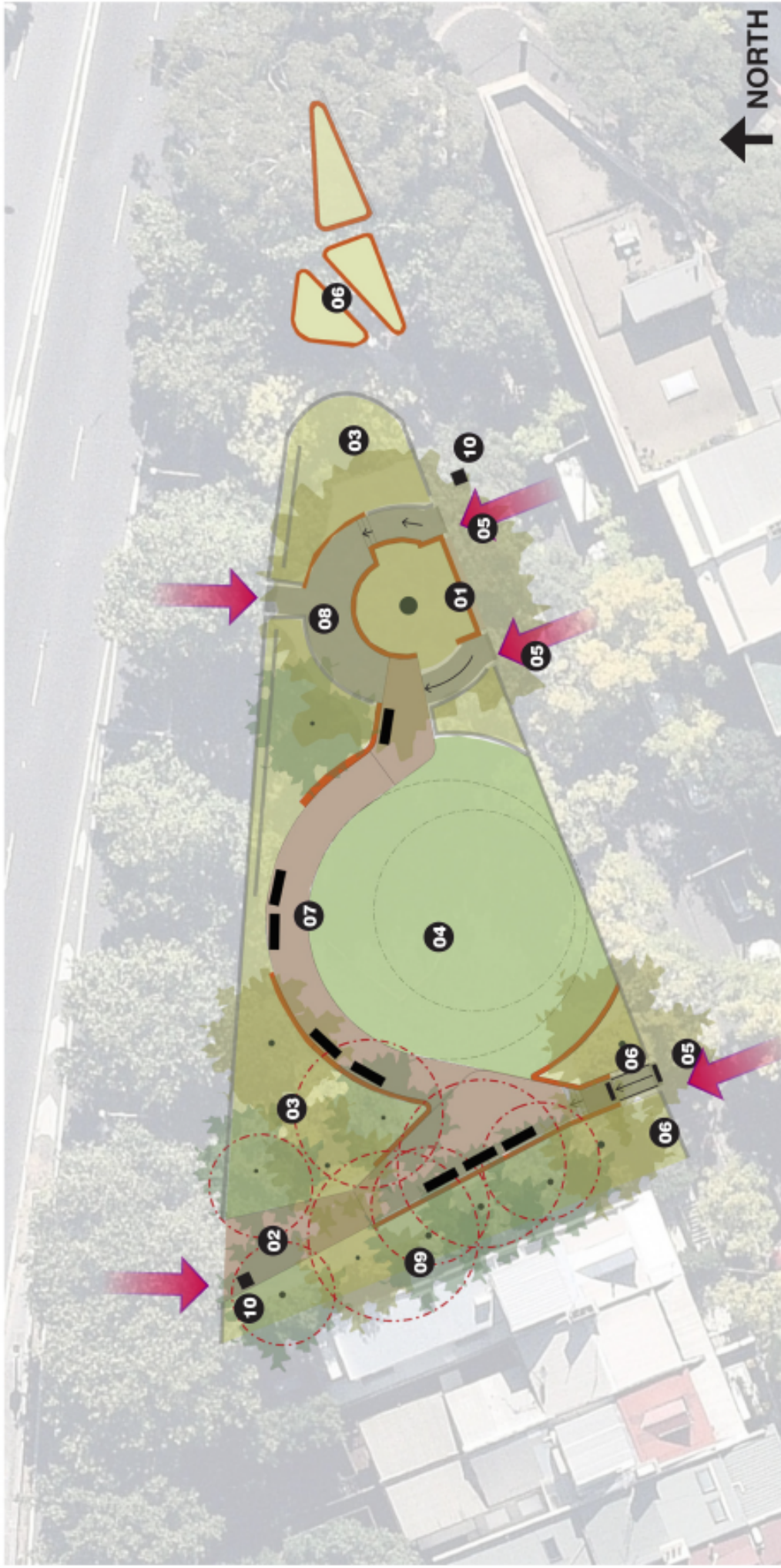


# **Attachment B**

## **Consultation Concept Plan**



# Proposed Works



- 01** Repair brick wall on Womerah Avenue
  - 02** Adjust pavement alignment to improve sightlines and accessibility from Craigend Street; including hand-rails
  - 03** New robust and unified planting through out the park
  - 04** Raise grass area to make more useable
  - 05** Retain existing stair access
  - 06** New stone edging to reduce wash-out of garden beds
  - 07** New path and seats from east-west
  - 08** Repair brick paving to improve accessibility to the eastern edge of the park
  - 09** Remove and replace seven dying trees
  - 10** Locate bins at entry/exit points
- Key**
- Repair Brick Paving
  - New Brick Paving
  - New Brick Wall/Edging
  - Existing Wall/Edging retain
  - Seat
  - Bin
  - Tree Remove
  - Tree Retain
  - Tree Proposed
  - Proposed Grass
  - Proposed Garden Bed

Document is Restricted

## Item 7.

### Project Scope - Ross Street Playground Upgrade, Glebe

File No: X018887.003

#### Summary

This report outlines the proposed scope for the renewal of the Ross Street Playground located on the corner of Ross Street and Charles Street, Glebe. This playground has been identified for renewal as part of the City's ongoing small parks and playgrounds improvement program.

Currently Ross Street Playground includes a small, aging playground area with pine bark mulch, sloping and flat turf areas, rocky outcrops and mature trees. The playground and turf areas are fully enclosed with a low chain wire fence.

The design has been refined in consultation with the local community and will retain all of the playground's trees, improve accessibility and expand the play opportunities within the site. Aging playground equipment will be replaced with new climbing structures, a slide, cubby house and timber platforms to utilise the site's existing sloping embankments. Swings and interactive equipment will be also be provided on flat areas with rubber softfall.

To cater for visitors who do not use the playground, a lawn area with shaded seating will be provided away from the playground equipment retaining the current arrangement of the site.

Following a four week consultation period held over April 2019, the City received 23 responses including 20 submissions in support of the concept design. Many responses requested an additional gate be added to the proposal, which has been incorporated into the design.

Construction is scheduled to occur from December 2019 until April 2020.

## Recommendation

It is resolved that Council:

- (A) endorse the concept design for the renewal of Ross Street Playground, as shown at Attachment A to the subject report, for progression to detailed design, documentation and tender for construction of the works; and
- (B) note the estimated project forecast as outlined in Confidential Attachment B to the subject report

## Attachments

**Attachment A.** Concept Design

**Attachment B.** Financial Implications (Confidential)

## Background

1. The City has an ongoing small parks and playgrounds asset renewal program to identify and resource works to ensure parks and playgrounds are 'fit for purpose.'
2. Ross Street Playground was identified for renewal between 2018 and 2020 as part of this program. The current playground is in poor asset condition and nearing the end of its useful life.
3. The City classifies Ross Street Playground as a pocket park. Pocket parks primarily service the local neighbourhood and are not envisaged to be a 'destination.' This has guided the scope and budget of the renewal works to be more of a modest upgrade compared to the scope of 'destination' parks such as the nearby Harold Park Playground.
4. Ross Street Playground covers an area of approximately 840 square metres and is defined by a perimeter chain wire fence to all sides. Within the fencing is a small and underutilised playground with old playground equipment and bark chip mulch, turf embankments, a number of semi-mature trees and sections of sandstone walling. A small number of neighbouring residents use a section of the footpath to the rear of the site to access as a shared driveway. A layback for this driveway is provided on Minogue Crescent. This access will be retained as part of the renewal works.
5. The design of the renewal works aim to improve the quality and amenity of the surrounding neighbourhood by creating a welcoming, safe and engaging play space within Ross Street Playground. The playground equipment has been designed to cater for primary school aged children.

6. Specifically the design aims to:
  - (a) improve access from Ross Street and Charles Street;
  - (b) replace the aging equipment with new and higher quality playground equipment utilising the existing embankments including climbing structures, a slide, cubby house and timber platforms. Swings and interactive equipment are provided on flat areas with softfall to meet Australian Standards;
  - (c) install a water bubbler;
  - (d) improve circulation by adding accessible paved pathways within the site and providing an additional entrance to connect to the adjacent school;
  - (e) renew the fencing and add hedging to screen the Ross Street traffic;
  - (f) provide shaded areas to sit and relax;
  - (g) retain all of the trees; and
  - (h) plant more shrubs, grasses and an additional tree to attract native wildlife.

## Key Implications

### Strategic Alignment - Sustainable Sydney 2030 Vision

7. Sustainable Sydney 2030 is a vision for the sustainable development of the City to 2030 and beyond. It includes 10 strategic directions to guide the future of the City, as well as 10 targets against which to measure progress. This project is aligned with the following strategic directions and objectives:
  - (a) Direction 2 provides a road map for the City to become A Leading Environmental Performer - the design will retain all of the current trees and utilise them for shade and play opportunities. The underlying theme of the design is to bring natural elements into the play space and new planting will provide an opportunity to increase biodiversity within the site.
  - (b) Direction 6 - Vibrant Local Communities and Economies - local pocket parks and playgrounds provide a unique focal point for local social and recreational activities. The new playground equipment will expand the recreational offering of the playground and enhance the liveability of the surrounding area for existing and future residents. Local parks and playgrounds also provide opportunities for local communities to interact, creating a sense of place and inclusivity.
  - (c) Direction 9 - Sustainable Development, Renewal and Design - the City's principles for sustainable design have guided the design brief for the renewal works and has sought to utilise natural and recycled elements. These principles will also be embedded in the construction contract.

### City of Sydney Open Space, Sports and Recreation Needs Study 2016

8. The Study provides a series of directions and recommendations for future planning, provision, development and management of public open space and recreation facilities within the City of Sydney.

9. The strategy notes the need to improve the quality and capacity of our open space to cater for a growing population through the:
  - (a) provision of new and improved recreational facilities and amenities to encourage social interaction;
  - (b) improved layout, legibility and circulation in public spaces to increase safety;
  - (c) achievement of greater aesthetic appeal; and
  - (d) promotion of quality park facilities to support the increased density within the City, encourage healthy lifestyles and support local ecology.

### **Organisational Impact**

10. The proposal will not have any significant organisational impact. New facilities will be monitored and maintained through current operational procedures and resources. New equipment will be regularly inspected and maintained under existing contracts to ensure compliance with Australian Standards.

### **Risks**

11. The Head Design Consultant will prepare a Design Safety Assessment to identify and minimise any risks provided by the new playground by ensuring the equipment and surrounding soft fall areas can be safely used, maintained and managed. The playground will also be certified in regards to relevant Australian Standards by an independent certifier during the design stage.

### **Social / Cultural / Community**

12. The renewed playground will provide more play opportunities for the community and cater to a wider age range of users of the playground. Seating areas may also encourage local community interactions.

### **Environmental**

13. The design retains all of the existing trees within the site and provides new tree and shrub planting as part of the City's 2030 Objectives for increasing tree canopy cover, promoting Biodiversity and supporting Urban Ecology.

### **Budget Implications**

14. The concept design for the renewal works has been quantified and costed and is forecast for delivery within the endorsed project budget. The budget for Ross Street Playground was endorsed by Council as part of the 10 Year Parks Renewal Capital Works Program in June 2018.

15. Confidential Attachment B outlines the endorsed budget and financial forecast for the project.

### **Relevant Legislation**

16. Local Government Act 1993 – relevant to the use of community lands for recreational activities and for procurement
17. Environmental Planning and Assessment Act 1979 (Part 4 and 5) - an external planning consultancy will review the scope of works to assess consent requirements for the project under the Environmental Planning and Assessment Act 1979.
18. Attachment B contains confidential commercial information of the City which, if disclosed, would confer a commercial advantage on a person whom Council is conducting (or proposes to conduct) business with.
19. Discussion of the matter in an open meeting would, on balance, be contrary to the public interest because it would compromise Council's ability to negotiate fairly and commercially to achieve the best outcome for its ratepayers.

### **Critical Dates / Time Frames**

20. The proposed timeframes for the site design and construction are:
  - (a) Council endorsement of the concept design and scope – June 2019;
  - (b) Completion of detailed design and procurement for construction – November 2019;
  - (c) Construction - December 2019 to April 2020. As the playground is adjacent to a primary school, works over the holiday period are expected to be less disruptive during this time.

### **Options**

21. Proceeding with the project would respond to feedback received from the community and deliver on the objectives of the Open Space, Sports and Recreation Needs Study
22. Council could defer or cancel this project, however this would not respond to feedback received from the community, and would lead to poor asset management outcomes. As the playground is currently in poor condition, delaying or deferring this project could lead to increased maintenance and repair costs to manage risks. Over time this could require the City to remove the playground equipment resulting in reduced amenity for the area.

## Public Consultation

23. The City sought feedback from local residents on the proposed Concept Design from 29 March 2019 to 29 April 2019. Responses were sought by sending letters to 321 residences, providing a consultation page and survey on the City's website and by installing signage in the park.
24. 23 responses were collected by the City's survey and by direct submissions received from residents, including 20 in overall support of the design, two objections to an un-gated entrance nominated in the design and one response which did not address the design.
25. The responses in support provided enthusiastic comments in regards to the City's intention to renew the playground.
26. The two objections to the new un-gated entrance on Charles Street have been addressed by adding a gate to this entrance. Nine supporters of the overall concept design also requested for this new entrance to be gated.
27. There were also a wide range of requests from residents nominating particular playground equipment to cater for the age group of their own dependants mentioned in their submission. The intention of the City's renewal of this playground is to provide play activities for the majority of users who fall within the age range of the adjacent primary school. As the playground equipment nominated in the Concept Design has been designed to cater for these users, further changes are not being made to the playground equipment. Within a five minute walk from Ross Street Playground are both Harold Park Playground and May Pitt playground which can offer play opportunities for wider age groups.
28. Four responses raised concerns regarding the presence of dogs within Ross Street Playground. The existing playground signage currently prohibits dogs from this site and this signage will be retained in the playground renewal. Rangers actively monitor parks such as Ross Street Playground for compliance with rules and bylaws stated on park signage.

## DAVID RIORDAN

Director City Services

James Lawton, Project Manager

Joel Johnson, Manager City Greening and Leisure



# **Attachment A**

**Concept Design**



Architecture  
Interior Design  
Landscape Architecture  
Urban Design  
Graphic Design

# ROSS ST PLAYGROUND FINAL CONCEPT DESIGN

For: CITY OF SYDNEY  
Date: 04 MARCH 2019



# ROSS ST PLAYGROUND - SITE ANALYSIS



**CONTEXT PLAN**

- ROSS ST PLAYGROUND
- LOCAL PLAYGROUNDS

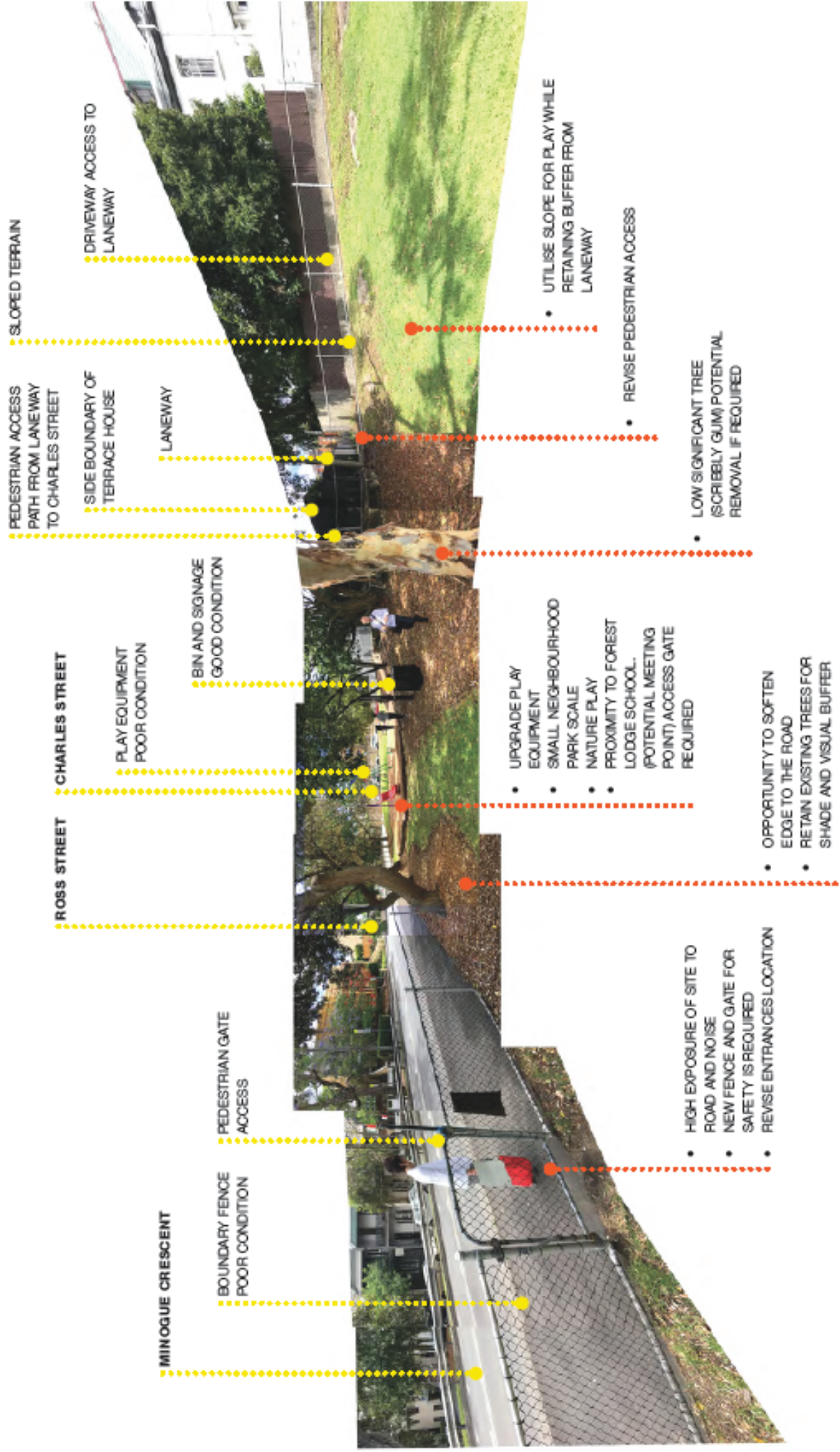


**EXISTING SITE PLAN**

- PLAY EQUIPMENT IN MULCH
- ➔ VEHICULAR ACCESS TO LANEWAY
- ➔ PEDESTRIAN ACCESS TO CHARLES STREET
- PEDESTRIAN ACCESS GATE
- MAINTENANCE ACCESS GATE
- - - SITE BOUNDARY
- SLOPED GROUND
- - - FENCE

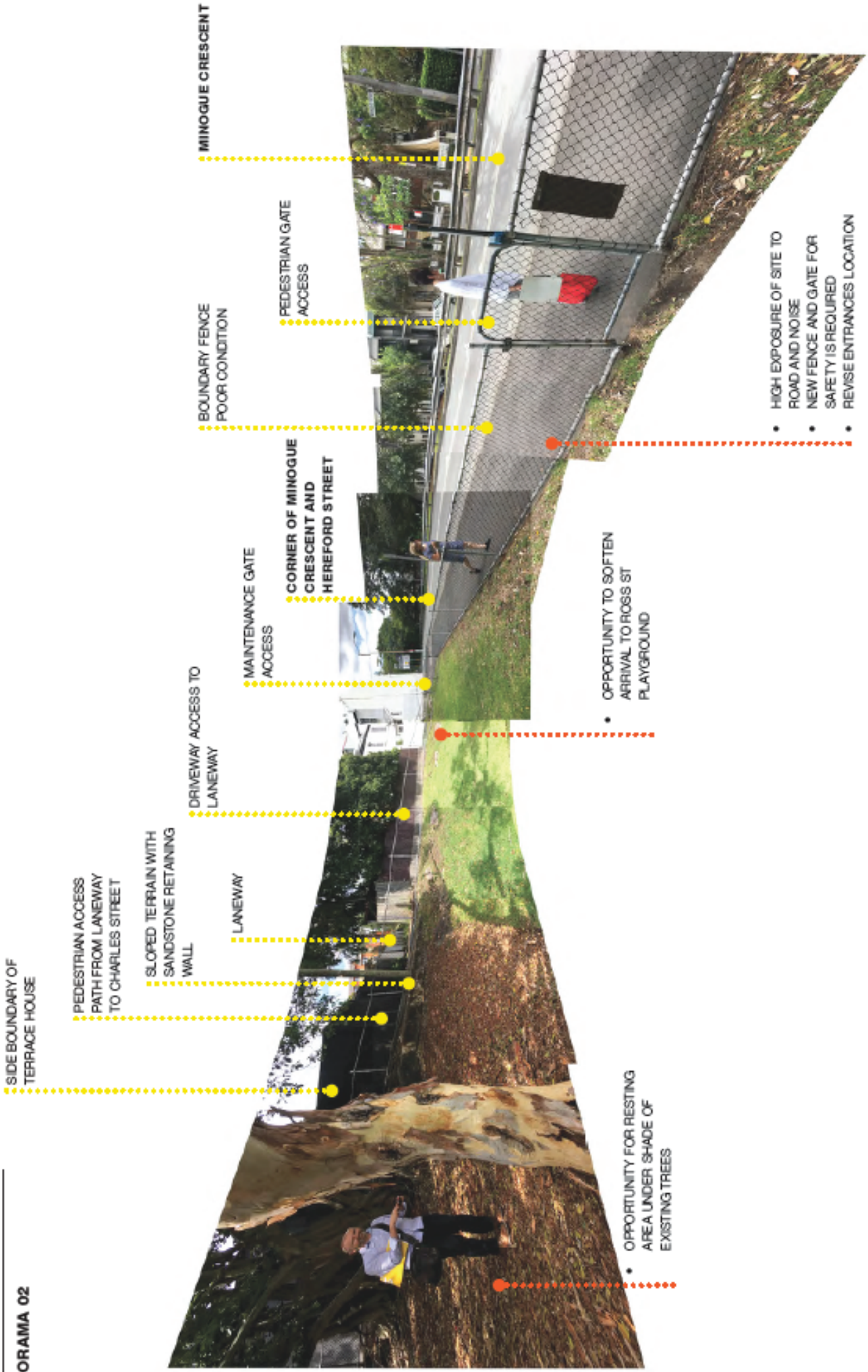
# SITE ANALYSIS

## PANORAMA 01



# SITE ANALYSIS

## PANORAMA 02



SIDE BOUNDARY OF TERRACE HOUSE

PEDESTRIAN ACCESS PATH FROM LANEWAY TO CHARLES STREET

SLOPED TERRAIN WITH SANDSTONE RETAINING WALL

LANEWAY

DRIVEWAY ACCESS TO LANEWAY

MAINTENANCE GATE ACCESS

CORNER OF MINOQUE CRESCENT AND HEREFORD STREET

BOUNDARY FENCE POOR CONDITION

PEDESTRIAN GATE ACCESS

MINOQUE CRESCENT

OPPORTUNITY FOR RESTING AREA UNDER SHADE OF EXISTING TREES

OPPORTUNITY TO SOFTEN ARRIVAL TO ROSS ST PLAYGROUND

- HIGH EXPOSURE OF SITE TO ROAD AND NOISE
- NEW FENCE AND GATE FOR SAFETY IS REQUIRED
- REVISE ENTRANCES LOCATION

# CONCEPT DESIGN

## LAYOUT

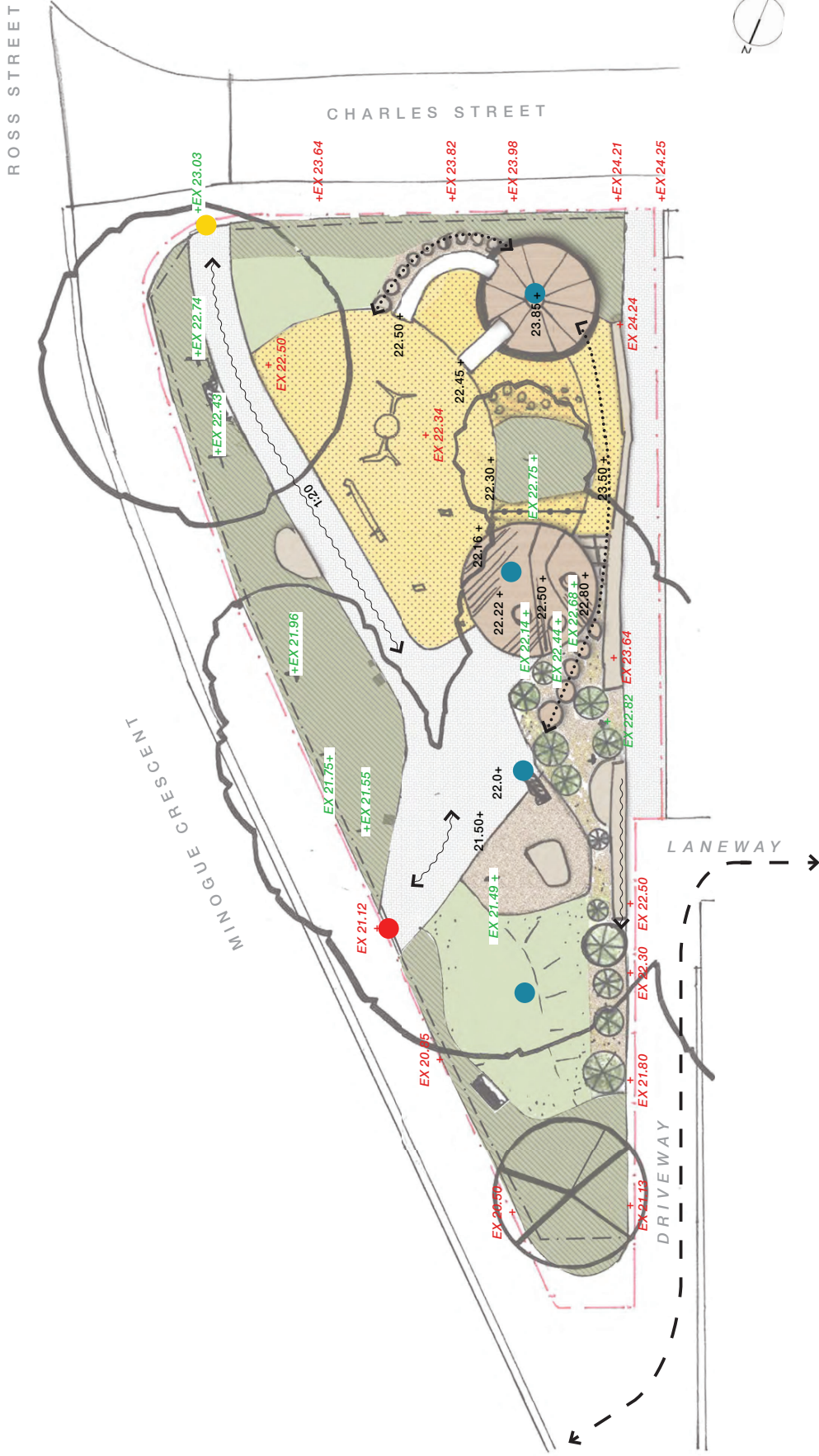


### LEGEND

- RUBBER SOFTFALL
- TURF
- MASS PLANTING
- MULCH
- EXISTING TREE
- NEW TREE
- FENCE x 1200mm
- EXISTING SANDSTONE WALL
- BRICK PAVING
- TIMBER PLATFORMS
- GATE
- GATE
- SLOPED TURF
- EXISTING SANDSTONE RETAINING WALL
- TIMBER / SANDSTONE STEPPING PLATFORMS
- A. BIN B. SIGN C. DRINKING FOUNTAIN
- SEAT WITH ARMREST AND BACKREST WITH CONCRETE BASE
- SEE-SAW
- TALL SLIDE -NON METAL
- WIDE EMBANKMENT SLIDE -NON METAL
- SOFTFALL MOUNDS
- SPINNER
- CLIMBING ROPE
- BIRDS NEST SWING
- SIGNLANGUAGE POSTS
- BUSH ROCK
- VOICE TUBES
- BINOCULARS
- 3x stepped timber platforms around existing trees
- Proprietary play equipment to access slides

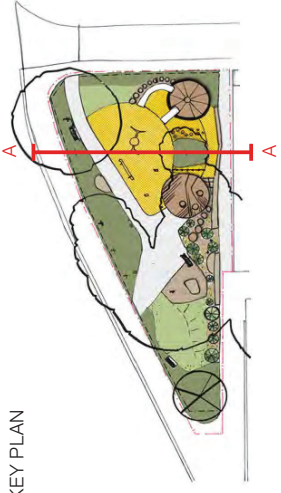
# CONCEPT DESIGN

## MOVEMENT AND LEVELS ANALYSIS

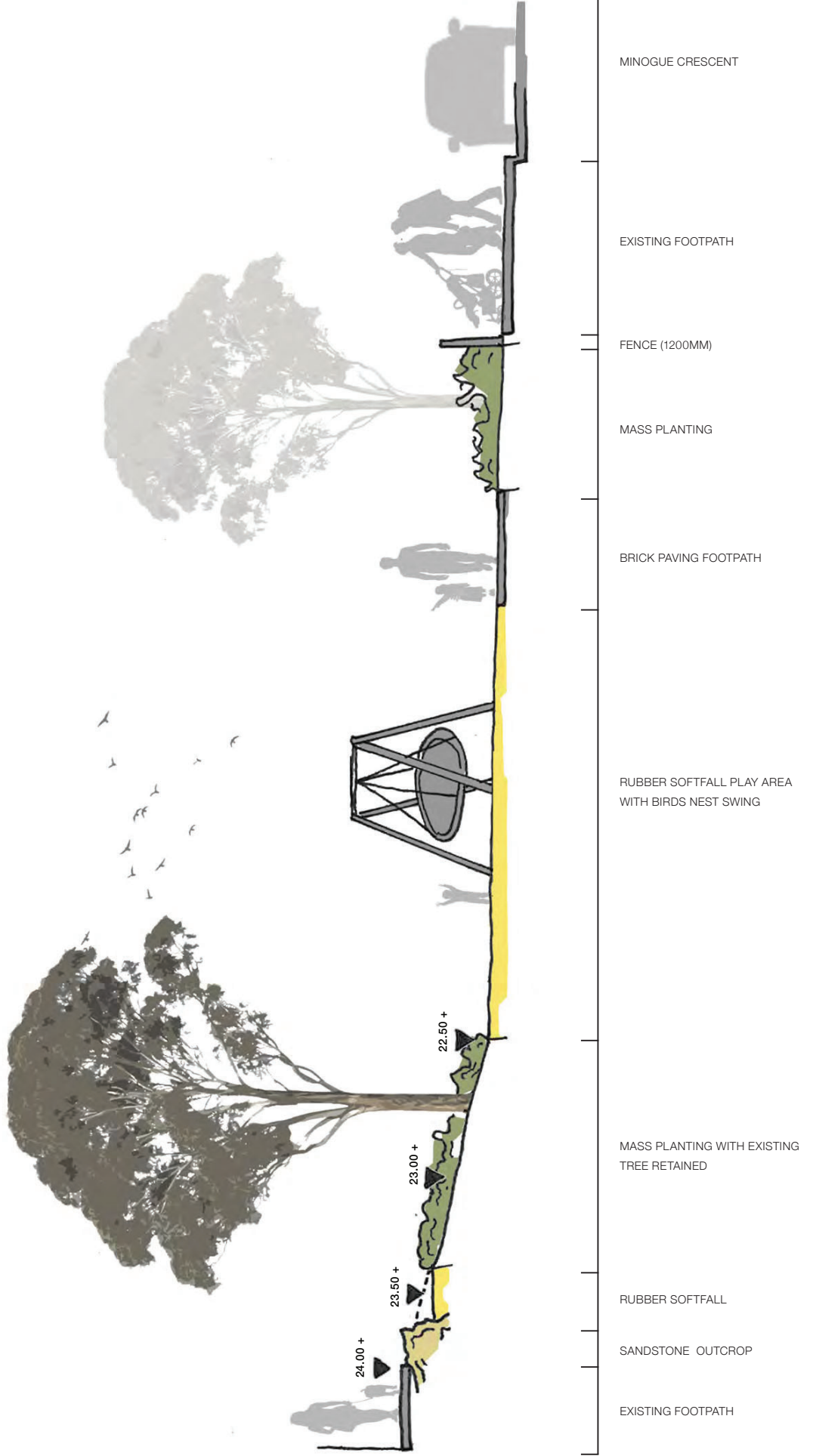


### LEGEND

- PEDESTRIAN ACCESS
- PEDESTRIAN GATE
- GATHERING
- VEHICULAR MOVEMENT
- MAIN PEDESTRIAN MOVEMENT
- DISCOVERY PATH
- + EX 21.0 EXISTING TREE LEVELS
- + EX 21.0 EXISTING LEVELS
- + EX 21.0 PROPOSED LEVELS



# SECTION AA





# PLAY EQUIPMENT AND MATERIALS



1



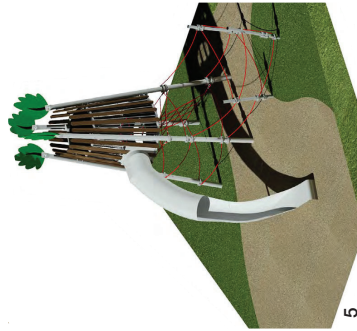
2



3



4



5



6



7



8



9



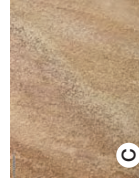
10



A



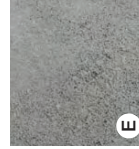
B



C



D



E

## LEGEND

- 1 LARGE EMBANKMENT SLIDE WITH CLIMBING ROPE
- 2 SPINNER
- 3 BIRDS NEST SWING
- 4 BINOCULARS
- 5 TALL SLIDE WITH BIRD HOUSE
- 6 SANDSTONE STEPPING LOGS
- 7 SIGN LANGUAGE POSTS
- 8 SEE-SAW
- 9 BUSH ROCK
- 10 VOICE TUBES
- A MULCH
- B RUBBER SOFTFALL
- C SANDSTONE
- D BRICK PAVING
- E CONCRETE

Document is Restricted